

THE LINK

Includes the Circuit Plan

Issue 64 December 24 / February 25



JESUS– THE LIGHT OF THE WORLD

CIRCUIT SUPERINTENDENT:	Rev. Derek Grimshaw	01362 882 116
CIRCUIT MINISTERS:	Rev. Anne Richardson	01760 720858
	Rev Jonathan Bell	01263 710009
CIRCUIT ADMINISTRATOR:	Marianne Lincoln	07736 467831
	e-mail centralnorfolk@outlook.com	
CIRCUIT SAFEGUARDING OFFICER:	Seb Bell	
	email: centralnorfolksafeguarding@outlook.com	

See page 3 for deadlines and Editor's contact information

MINISTER'S LETTER

Dear Friends,

The older I get, the more of a purist I feel to be coming. When I was a little lad, my brother and I would go to bed on Christmas Eve and when we woke up on Christmas morning, the front room would be decorated and the Christmas tree would have been erected. My dad used to insist that the period before Christmas Eve was Advent and Christmas started on Christmas Eve. Working for a high street retailer later in my life I used to say that Christmas began when the final till closes on Christmas Eve.



I get irritated these days when I see Christmas Trees going up in November and even worse, shops promoting Christmas earlier and earlier every year and television adverts specifically targetted at children. According to “the media” Christmas starts the moment that Halloween is finished. I also shout at the television when the exuberant presenters announce on Boxing Day “now that Christmas is over” and I respond yelling “over!!! it has only just begun!”

Alright, you might say to me “surely there are bigger issues in the world to be worrying about” and you would be right, but I will continue to plea for the importance of advent, the season of waiting in eager anticipation is essential. We live in a world where everything is instant and we don’t like waiting, we want everything and we want it now, we’re not used to waiting. Maybe if we spend four weeks in eager anticipation, the Christmas message may be appreciated all the more.

In the same way, things happen today and if we’re not careful we can move on far too fast and I think that when we do, we devalue the occasion. There is a culture in so many homes in the western world that once the presents are opened, Christmas dinner consumed and the King’s speech listened to, it’s job done, Christmas is over for another year and life can go back to normal. Can it? I don’t think so, if God so loved the world that he sent his only son, this is a life changing event and is so much more than simply exchanging gifts and overindulging.

Churches up and down the country will be trying to entice people into Church this Christmas, but Christ isn’t just for Christmas, so we need to help people to prepare, to understand the enormity of what happened at the first Christmas and how life changed forever that night. This is far more than just a good story from history, Christ may well be the one that people across the world are searching for. It is our duty to make him known.

Derek

THE LINK

Once again an awful lot has been happening in our Circuit and it is significant how many photographs have appeared this time. God is keeping us busy and it is good to be showing we are good witnesses and welcoming people to our neighbours.

Inevitably two events in the Christian calendar dominate this edition—looking forward to Christmas and back to Harvest Festivals. They both show us the goodness of God in our ongoing relationship with him. Having said that we must also remember that there are many parts of the world where there is immense suffering caused by people trying to impose their own agenda. This has nearly always been true—try just about any Old Testament book and see God's reaction to it.

I mentioned Christmas earlier. I do hope we all see Christmas for the exciting time it is. God did something very special all those years ago in Bethlehem, but it wasn't simply a one-off. God has exciting plans for us every Christmas and I trust we don't groan as we see Christmas goodies in the shops, Christmas lights appearing (ever earlier it seems!) in our towns and villages and

Christmas carols played in our supermarkets (when else will you hear Christian music played in a supermarket?). Make the most of it. Don't worry if you can't remember where you put last year's Advent Ring—make a new one!

So here you have another edition of The Link. Remember it is intended as information for ourselves, a means of praying through all that is happening, and something to give to visitors to our churches.

As many of you know my health has recently deteriorated considerably and I must admit I have found putting this together quite an effort. (I hope it arrives on time!) I have, however, been very touched by the number of cards and good wishes I've received both from individuals, churches and, indeed, the whole Circuit. I'm immensely grateful and thank you all for your concern and prayers.

Blessings

Tony Hey

DEADLINE

**FOR THE
MARCH-MAY
EDITION**

**SATURDAY JANUARY
25th**

*Please include details of activities
up to the end of May*

CONTACT DETAILS

Please send information for
publication to
Tony Hey

E-mail: t.hey@btinternet.com

Phone: 01263 713302

Address: 4 Burrell Close
HOLT
NR25 6DT

LOTS HAPPENING AT

WORK ON THE EXTERIOR IS NOW COMPLETE



Coffee Morning September 7th.

SCULTHORPE & FAKENHAM



Harvest Festival September 15th





The Pilgrim Methodist Church

Walsingham



WALSINGHAM CHAPEL

Since Sam left, three of us have opened the chapel on Fridays over the summer. Between June and the end of September we have welcomed around 270 visitors in addition to school parties during June and September with around 60 children and teenagers on each occasion. It never ceases to amaze us that things we take for granted such as hymnbooks, pulpits, fonts, and pews etc., mean nothing to so many young people today. Obviously, this is not what our faith is all about but it does demonstrate how things have changed in only a few years and how little about Christianity is now taught in schools.

We consider the opportunity to talk to groups like these, and amidst the history show a little of our faith a real mission opening. Their visit to Walsingham may be the only contact they have with Christianity. What a responsibility. This is an area that we really want to develop further.

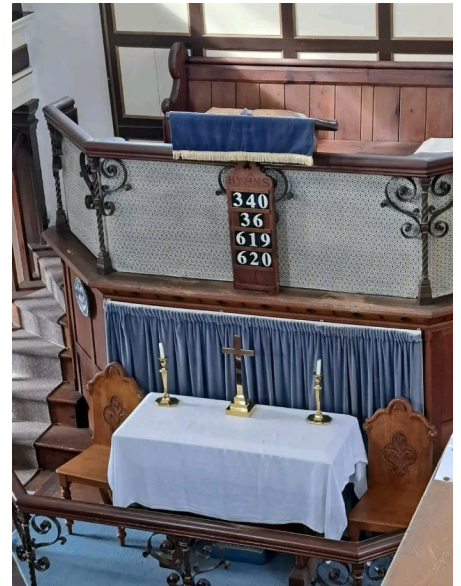
We frequently get into conversations with older visitors many of whom have dormant memories of attending Methodist Sunday Schools and Chapels in years gone by. Again, it gives an opportunity to share our faith as we explain something of the history of Methodism and the Chapel. This can work in reverse as well as visitors from other denominations share something of their story and life experiences.

If any readers would like to volunteer to help open the chapel next year from April to September by perhaps being present on one day a month from 11am to 3 pm then please have a word with Glyn Angela or Aileen.

Our times of worship have continued on the second Sunday of each month at 4-30pm followed by a meal together. Those for the next quarter will be on:

December 8th, January 12th and February 9th

All are welcome so do feel free to come along if you are able.



ATTENDING MEETINGS

SOME THOUGHTS FROM JACKY WOOR

I have found myself thinking about what it means to attend various meetings recently. I have been to country chapels for two or three, to council meetings at church, usually 10-15 people. Even to Synod – roughly 150 people. Years ago I went to the National Network (MWiB) Conference at Swanwick – roughly 200 people, mainly women in attendance. I found that thinking about these different meetings and how I reacted to them was something that I had not really thought about before.

Naturally, we react differently according to the number of people and also our reason for being there. Travelling just a short distance to attend a church council meeting is somewhat less concerning than travelling over 150 miles to a National Conference. The former contains people I know, the latter will be mostly strangers.

I then thought about a couple of long trips I have done overseas. Arriving at an airport with no clue as to what to expect, boarding the plane and wondering how many of the people onboard are doing the same as me and getting off to either change planes or meet up with my fellow travellers on holiday. After the change of plane I was met by a friend who I was staying with and travelling in her car to her home. I was in South Africa and there to see a different way of life, a different outlook from her windows. On the holiday trip to the USA I was met by the holiday guide and my fellow travellers who had all been on the same plane but totally unknown to me. Again I was seeing a different outlook from the different hotel windows and meeting different people.

You may wonder where this is leading!! Well, I was thinking about Jesus and his travels. To start with on his own in the desert, then choosing the disciples as he travelled about his home area. Gradually as his ministry proceeded so did the number of people following increase. Yet, he did not change, he reacted the same way to everyone, no matter who they were – Jew, Roman, religious leaders or untouchables such as lepers. Never do we see him reject or ignore anyone who approached him, he was the same to all.

Can we honestly say that is our reaction? Well, I'm certainly not going to claim to be that friendly to everyone! As a Christian I know I should, but I am also a human being, and I have different feelings to some who I meet.

May I (we) all try to be like Jesus, giving of ourselves to all who we meet, never shunning anyone even if that means liking the unlikeable.

Blessings,

Jacky Woor



After four years of busy and growing activity at *The Hive*, it seems the right time to take stock and get a sense of where and how *The Hive* might develop its mission and outreach. We know the impact it has had on individual lives and indeed on the small team who run the programme. We know, also, the wider influence of *The Hive* as a successful means of repurposing a church building and as a contemporary way of being church by opening up pathways for spiritual growth to people of all faiths and none.

Possibilities for *The Hive* are by no means exhausted and a good next step would be to bring in a lay worker who can view *The Hive* with fresh eyes and develop certain strands of work including their own passions and vision. Working towards this, we have greatly benefited from the input of the District Mission Enabler, Dr Yasmin Finch, who is supporting us in applying for funding for a lay worker under the *New Places for New People* scheme.

New Places for New People is part of the Connexional programme, *God for All*, and is for people not connected to religious traditions or faith communities, which makes it a very good fit for *The Hive*. It is about a new and transformational way of being gathered people – listening, learning and loving.

At the end of October, three District representative members of the *New Places for New People* scheme dropped in to *The Hive* while we were running a *Thoughts on Thursday* session about *Spirituality in a Secular World*.



Left to right – Yasmin Finch

Jenna Thorne

Jane Green

Jenna Thorne is an officer for the East Anglia Learning Network as well as being Executive and Artistic Director of *Talitha Arts*, a charity which provides therapeutic arts workshops and training for those who have experienced trauma, abuse, violence, homelessness and for those living with dementia.

Jane Green lives near North Walsham and is involved in an exciting new project called *Wave Station*, which hopes to re-purpose Mundesley church as a centre for local surfers.

The Guiding Group was able to sit down with Yasmin, Jenna and Jane to pull together many threads of thought into a cogent proposal for *The Hive*.



Guiding group to the left – Sarah, David, Susan and to the far right, Geraldine.

There is of course a process to follow as the application is submitted and makes its journey through the various decision-making committees at Circuit, District and Connexional level until a decision is reached by the end of February 2025.

Circuit has already given its support with a pledge for funding over the five years of the proposed appointment, and all at *The Hive* ask for prayer support as the application moves to the next level.

There are a lot of other exciting projects around Connexion in the pipe-line or already happening and it is well worth a look at the Connexional website where there are videos of the people involved in them.

Search: Methodist Church in Britain – For Churches – Evangelism and Growth – New Places for New People.

<https://www.methodist.org.uk/for-churches/evangelism-growth/new-places-for-new-people/>

Sarah, Geraldine, David and Susan

BUSY TIMES

ALL ARE WELCOME IN THIS PLACE

In Watton we are privileged to have a Community Centre attached to the Methodist Church. Coffee mornings are held every Wednesday morning alongside the Country market and various other groups hire the centre during the week, including the Foodbank and The Dementia Café. A few years ago we decided to start a new Church group. We have been holding a session once a month on a Tuesday afternoon at 2pm, aptly named Tuesdays@2. We have had a variety of activities, crafts,



games, musical bingo and lots of fun, singing and fellowship not to mention the refreshments. Our group is open to anyone in the community and we have been drawing new people in to join us. Although mainly secular afternoons we strive to highlight the Christian Festivals during the year, Easter Wreaths and Cards, Harvest, Christmas Carol Lanterns and a strong Climate Change theme. We are looking forward to an action packed Autumn featuring Creation in September with Amazing Butterflies, Corn Dollies in October for Harvest, Endangered Animal Bingo in November and Christmas Poems & Reflections with Carol Singing in December.

We have made lots of wonderful creations from Napkin Holders to 3D Teal Ducks. Many special comments have been made like this is exactly like the rose in my Wedding Bouquet. We even had our resident artist help us to paint Mandala Stones during which the room was very peaceful and quiet. We are trying to Build a house where love can dwell. In the

Spring we are looking forward to making Felted Bead Bracelets and trying our hand at Spirelli Cards, along with lots of fun & laughter.

We are hoping that the love of Christ will end all divisions because, All are Welcome in this Place.

Shirley Stephen



AT WATTON

BIKERS AT WATTON

In late August the bikers came to Watton High Street - from all over East Anglia and beyond. It was an impressive sight, upwards of 2,000 powerful motorbikes and their owners and friends lined up from one end of the street to the other.



For the first time in the history of this annual event we decided to open the Methodist Centre for refreshments, not knowing whether many people would drop in. A dedicated group of ladies hurried next door to the Centre after morning worship and found ready customers. Having come all that way, they needed to find something wholesome to eat and drink. We were kept busy making more and more filled rolls and hot dogs

and brewing multiple pots of tea, and of course there was a splendid selection of home-made cakes.

The atmosphere was very jolly, with everyone just relaxing and enjoying themselves, and we were able to send £150 to the Meningitis Research Fund in memory of Caroline Neave as well as raising funds for our church.

We agreed that we would love to do it again next year.

From Lyn Callnon



HINGHAM CELEBRATES HARVEST



Sunday 29th September was Harvest Festival Sunday at Hingham. We celebrated as usual with a good display of fresh produce, tinned food, dry goods and plenty of wheat sheaves! The wheat had been 'safely gathered in' by a local farmer, Andy, who provides us with it each and every year. Back in the day, his mother was a local preacher in our Section,

Mrs Violet Jeffrey.

We are proud to have the wooden Cross, crafted by Andy, mounted on our Lectern. This was originally made for his mother's Chapel at Deopham, (now long closed) and given to us when Violet passed away.

The Cross and the plaque on the Lectern, reminds us of Violet's dedication during 60 years of local preaching. It also reminds us



that she was a farmer's wife, and as such Harvest Thanksgiving was, and still is a very important Sunday in our Church calendar which we as countryfolk celebrate with praise and joy! Aptly led, as usual by our friend and local preacher Nelson Tubby.

ALL IS SAFELY GATHERED IN!

HELHOUGHTON VILLAGE CHURCH HALL CHARITY COFFEE MORNINGS

It is very heartening that our Coffee Mornings regularly raise at least **£100** now, even when numbers are occasionally down. We are often clearing up after 12:00 around people who are still deep in conversation! There is a lovely community spirit where new friendships are being forged.

Here are the totals raised for the charities supported in the last few months:

- July, **YANA** (You Are Not Alone), **£142**
- August, the **World Wide Fund for Nature (WWF)**, **£100**
- September, in aid of play equipment for **The Bishop's CE Primary Academy, Thetford**, where Rachael Laws of Swaffham teaches, **£145**. Both Rachael and the Head were thrilled with the amount. Pupils on the school council will be involved in some of the decision making about how it will be spent.

In early October we fitted in a fundraiser for **Save the Children** at rather short notice, also selling Christmas cards (earlier than planned as their cards representing the true meaning of Christmas are in short supply this year for some reason) and holding a raffle. Cards were also sold the previous evening and the total raised amounted to **£365.20**, a wonderful sum.

The grand total for the events above is **£752.20**! We are so very grateful for all the support.

Our next Coffee Mornings (10 – 12) are on:

Tuesday 26th November in aid of **ShelterBox**, which provides emergency shelter and tools for families robbed of their homes by disaster

Saturday 7th December in aid of the **Mid Norfolk Foodbank**

We would be especially appreciative if you could bring along anything from the following list: tinned vegetables, tinned fruit, instant mash and coffee plus Christmas treats!

Tuesday 28th January in aid of **The MND Association**, a UK charity that supports people with **Motor Neurone Disease**, their families and carers, funds research, improves care and campaigns for better services and a cure

Tuesday 25th February in aid of **Mercy Ships**, a global Christian charity that brings hope and healing to those suffering from disability, disfigurement, and disease. They deploy hospital ships and partner with African nations to transform surgical systems and provide free surgery to those most in need.

*Elizabeth Lodge
Tittleshall Methodist Chapel*

HARVEST WEEKEND

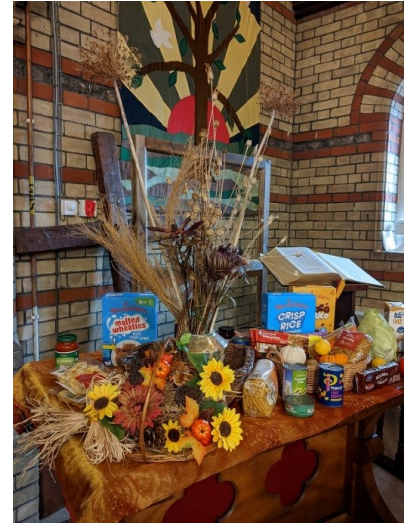


Harvest Supper was thoroughly enjoyed by everyone attending where they feasted on Sausage casserole, Yorkshire puddings, roast potatoes and vegetables followed by the usual large selection of puddings, Cheese and Biscuits and Coffee and chocolates. There was a lot of fun and laughter as we looked at photos set around the room of childhood/youth photos of us all, very few of which we could recognise! We also tried to solve ten Catchphrases which we did more successfully than the photos. Prizes were given to those with most correct answers. During the meal we had a picture quiz to solve and after the other competitions we finished with a music quiz and Harvest themed questions. After sharing The Grace everyone left having had a most enjoyable evening. All that was left to do was the clearing up but a wonderful team effort made even this chore seems fun. We were able to send £100 to Christian Aid Gaza Appeal from excess over expenses from ticket costs.



AT HOLT

Gifts of produce from Harvest Festival went to The Foodbank and The Treehouse with our cash collection going to Christian Aid Gaza appeal.



Jonny took the Harvest Festival dressed as a strawberry much to the amusement of some South African visitors. It was an excellent service



GARVESTONE HARVEST FESTIVAL

Today we held the joint Harvest Festival Service with the Parish Church. The display that was created with donations from the Chapel members and the local community.

Over £140.00 was raised for Christian Aid. The perishable goods will go to the Community Fridge at Green Pastures Bookshop. The non-perishable items will go to the Mid-Norfolk Foodbank.



TITTLESHALL CHAPEL MACMILLAN COFFEE MORNING

A willing band of us created various bakes for this annual fundraiser for the cancer charity and although numbers were down on the previous year, there were a few people unable to come who donated nevertheless and helped push up the total to **£382!** Thank you so much for your generosity. We had extra volunteer help in the kitchen, washing and drying up and putting away, which is always greatly appreciated.

Elizabeth Lodge

TITTLESHALL AND LITCHAM JOINT HARVEST FESTIVAL AT TITTLESHALL

Our joint services are becoming more frequent and we really enjoyed all being together again for this one, led by Revd Anne, with her lovely dog Merlin for company.

There was a very good number of items brought in for the Mid Norfolk Foodbank and the £75 collection was donated to the charity Ripple Effect (formerly Send a Cow).

Elizabeth Lodge



JESUS, MARY AND JOSEPH IN THE STABLE



THE SHEPHERDS



THE WISE MEN

WHAT IS OUR ROLE?



EAST ANGLIA METHODIST HERITAGE CENTRE at Wighton

APPEAL 2024/25

Update Autumn 2024

Our Heritage Centre has been open for 2 years, telling the story of Methodism's contribution to East Anglia over the last 250 years. During both years we opened 2 days a week from spring to autumn and welcomed a steady stream of visitors from many parts of the UK and beyond, over 400 in 2023 and over 300, so far, in 2024. We are regularly given items of Methodist historic interest to display and boxes of paper ephemera for our reference library, so much so that we have run out of space.

But we have a plan!

The Plan

- The Circuit Trustees have given us permission to expand and North Norfolk District Council have granted us full planning permission to: Extend the library, doubling its size
- Convert the 1950s toilets into one wheelchair accessible toilet and a walk-in store.

Costs

£62,620.40

Our Aim is for the builders to start work before Christmas 2024 and complete in March 2024 so we can re-open at Easter 2025.

Your quick response would be much appreciated. Every little helps.

We still have £42,070 to raise and more grant applications have been made. Any donations, however small, would be greatly appreciated.

If you wish to contact me my address is: 10 Quayside Court, Wells-next-the-Sea NR23 1FA) and cheques made payable to Wesley Historical Society East Anglia would be helpful.

Elizabeth Bellamy

Please see Gift Aid Form overleaf

Gift Aid Declaration

Please treat as Gift Aid donations all qualifying gifts of money made (tick ALL relevant boxes)

today in the past 4 years in the future

Boost your donation by 25p of Gift Aid for every £1 you donate

Gift Aid is reclaimed by The Methodist Church from the tax you pay for the current tax year. Your address is needed to identify you as a current UK taxpayer.

By completing this form you confirm:

"I am a UK taxpayer and understand that if I pay less Income Tax and/or Capital Gains Tax than the amount of Gift Aid claimed on all my donations in that tax year it is my responsibility to pay any difference."

Please complete in capitals

Date:

Circuit Name: Central Norfolk Methodist Circuit

Title	Initials*	Forename(s)	Surname*
Address* (House Number and first line of address at least)			
Signature (Optional)			
Post Code*			

***Please note that the details marked with * are mandatory.**

Please notify your Gift Aid Secretary if you:

- o Want to cancel this declaration
- o Change your name or home address
- o No longer pay sufficient tax on your income and/or Capital gains.

If you pay Income Tax at a higher or additional rate and want to receive the additional tax relief due to you, you must include all your Gift Aid donations on your Self-Assessment tax return or ask HMRC to adjust your tax code.

If you pay Income Tax at a higher or additional rate and want to receive the additional tax relief due to you, you must include all your Gift Aid donations on your Self Assessment tax return or ask HMRC to adjust your tax code.

Privacy Policy

To find out how local Methodist churches process personal data see: www.tmcpc.org.uk/mt-privacy; and for the Methodist Church's data processing policy see: www.methodist.org.uk/privacy-and-cookie-policy.

NEWS FROM CHURCHES

NEW HOLKHAM

New Holkham had a lovely harvest service with Rev Betty Trinder revisiting and leading our worship. The harvest sale was the usual mischievous event with lots of giggles. Will Freeze was present at the end in the form of some beautiful bakes and the congregation dug deep. Which was very much appreciated.

We have the much loved, and always popular, Christmas service on 8th December at 2.30pm. Beryl Flood puts a lot of time and effort into preparing the worship, especially for the young people who enjoy this service immensely



GRESSENHALL

The Christmas Angels will again be outside the Chapel and 12, Chequers Lane from the 1st December in a different format this year.

Please take one for your Christmas tree, as someone at chapel has made them with love for you.



HOLT METHODIST CHURCH
CAROLS SINGALONG
SATURDAY 21st DEC 4 - 6 PM
CUPPA & CAKE INCLUDED



CAROL SERVICE WITH CHRISTINGLE
SUNDAY 22ND DECEMBER @ 11AM
REFRESHMENTS AFTERWARDS



EVERYONE WELCOME TO BOTH

NEWS FROM

LITCHAM

As I write this, I am delighted to report that here at Litcham, we have had a wonderful weekend. Saturday night saw us host our annual quiz night at the Jubilee Hall. It was supported extremely well by the local community and beyond and thanks to our wonderful team was a huge success. Sunday morning saw us joined by our friends from Tittleshall for a lovely service followed by a celebration lunch in honour of Veronica Little and Stephen Lynn as a thank you for their 40+ years of service. We are so blessed at Litcham to be surrounded by some truly wonderful people.

Looking forward to the next few months, we are holding a Carols, Coffee and Cake afternoon on Saturday 15th December at 2.00 pm. This will be a lovely occasion to sing some Carols while enjoying a cuppa and a piece of cake.

We are also having a Christmas meal at The Bull, great food, great company and ending with a great sing song. Anyone is welcome to this event taking place on Saturday 7th December, tickets are £11.50 per head. If you wish to join us, please contact Stephen Lynn on 01328 700978.

Our coffee mornings continue every Thursday morning at 10.30. If you're passing, please drop in and say hello. We'd love to see you.

As we approach such a special time of year, it is so important that we remember the value of sharing: Share the story of Christmas, share time with family and friends or share a meal. Who could you invite to attend an event being held at your church? Who could you pray for?

SCULTHORPE & FAKENHAM

On 28th July we had a wonderful Service of Talents. The Chapel was full of beautiful examples of our members' handicraft photographs and paintings. In the afternoon we welcomed our guest musicians and singers. It was a great afternoon. Many thanks to everyone who took part or helped in any way.

September 7th saw our Coffee Morning. There were various stalls including a luscious looking cake stall - £636.5 was raised. Thanks once again to everyone for help and support.

For 'Harvest Festival' the Church looked lovely with all the harvest gifts and flowers. We were able to send 31.5 kg items to the Foodbank. Members of the congregation read about difficult weather conditions and other situations in Zambia, Bangladesh, Ethiopia or the Democratic Republic of Congo. We have sent a donation to 'All We Can'. Thanks once again to everyone who gave gifts and helped in any way

WATTON

Our Wednesday Coffee Mornings continue to thrive run by our own volunteers of other local groups. Similarly Tuesday at Two is proving a great success. In December we shall be enjoying Christmas poems and reflections accompanied by Carol Singing. The New Year meetings have yet to be arranged.

Remember, as John 3 v 17 tells us: For God did not send his son into the world to condemn the world, but to save the world through him.

CHURCHES

HOLT

We continue to have a busy time. Our annual Pet Service in August proved a great success as previously. We are rejoicing that our church is continuing to grow which is very encouraging.

Our Christmas services are listed elsewhere but note that we shall be having a dementia-friendly Christingle Service, which will be led by Becca (Rosemary's granddaughter and doing so in her role with All We Can) and Rev Jonny.

A great deal of work had to be done earlier in the summer with our fundraisers in submitting the second stage (out of three) application for funding to the National Heritage Lottery Fund. We will probably know the outcome by the time you read this.

We have experienced one wonderful answer to prayer in that God has provided several people to take over the jobs which Tony Hey's unfortunate illness has forced him to give up. He will still be around in the background to be consulted if necessary.

The major event of the Autumn has been our Harvest Festival weekend with Harvest Supper on the Saturday and Harvest Festival Service on the Sunday. There is more information about that and lots of photographs (including a slightly unusual one of Rev Jonny!) on pages 14-15.

So now we are heading up to Christmas with various special events as well as the more traditional ones.

Visitors are always welcome – don't forget Joselyn's Afternoon Teas!



SAHAM HILLS

A quiet few months for us here at Saham Hills, we have held a service every Sunday with our small faithful congregation. Our Art & Craft Show coffee morning on September 14th was a little disappointing in visitor numbers but our regular village neighbours helped us to achieve a decent outcome. I expect a lot of chapels experience the same at this present time, money is hard for most people and there are so many events happening around our area but we must continue to show that our small chapels are still here and welcoming and deserve a place in our villages. Our harvest festival on the 6th October was a joy with Reverend Anne leading our communion service, it was lovely to see her here and Quentin Stephen joined us as well, he will be taking a service with us November. Our table of harvest offerings will go to the Watton Food Hub. We are already preparing for our Christmas Tinsel Fair on November 23rd. we have changed this date from the 30th November as it clashed with St. Georges' Christmas Fair. I wish all our chapels in the circuit good luck with their own upcoming events.

GARVESTONE

We are now using our winter timetable for Sunday worship services – 3.00 p.m. starts, except on third Sundays, when we meet at 11.00 a.m. for United Services at either our Chapel or Garvestone parish church; except in December when we will meet at our chapel on Sunday 22nd. When a worshipping group is as small as we are, there is no chance of any newcomer / visitor being overlooked; and we hope our occasional new faces feel comfortably welcomed.

NEWS FROM CHURCHES

MATTISHALL

We were pleased to welcome Rev Derek and Karen for their first visit to our chapel for the Harvest Festival service in September. The chapel had been decorated by members and included a large table of food which was donated to the local Foodbank. Fellowship continued afterwards with light refreshments. Although the chapel was open for the Annual Churches Trust Bike Ride we only had two visitors this year.

We hold a joint Bible study with Garvestone on Thursday afternoons from 2 to 3-30pm. Alternating venues. Numbers are usually just below 10, others would be most welcome.

On December 8th we will visit Welborne Church for the annual visit of the Dereham Salvation Army Band. We are planning to hold the World Day of Prayer service at the Mattishall Parish Church on 7th March 2025 focusing on the Cook Islands.

GREAT ELLINGHAM

Our Harvest Festival at the end of September led by Rev Jan May was a great success and was followed by Harvest Lunch. A generous donation was sent to All We Can. Our Carol Service will be on December 22nd, complete with a mince pie!

FULMODESTON

We continue our services on the 1st and 3rd Sudays at 2.30pm. Our Christmas Carol service will be held on December 15th at 2.30 and will be led by Mrs Beryl Flood. Rev Jonny Bell will be taking our Covenant Service on January 5th at 2,30. All very welcome at these services.

WELLS

with Churches Together in Wells

Our main Carnival Week activities in August were "Mindful Music" on the Wednesday, which became an informal but very enjoyable "Songs of Praise" when a power cut put our CD player out of action, and the "Carnival Songs of Praise" on Sunday, which attracted a good congregation and was enjoyed by all.

In September we held a very successful Gift Day combined with a coffee afternoon, then a week later our Harvest Festival, with the offering being given to the Christian Aid Gaza appeal together with other Churches in Wells.

Our coffee afternoons have been a valuable time of fellowship. The next one will be on Saturday **morning**, the 14th December, between 10.00am and 12.30pm when we will raise funds for the charity "Shelterbox".

We always look forward to the Carol Service, which will be on Sunday 22nd December, led by Revd. Elizabeth Bellamy.

The New Year will see us continue to work closely with Churches Together as we welcome the congregation of St Nicholas to join us again in our Covenant service on 19th January. This is at the start of the Week of Christian Unity, when services are held each day in one of the Churches. Our usual Prayer & Praise service on Wednesday morning will be our contribution to the week.

We are already looking forward to Carnival 2025 but that is for a future magazine!

AROUND THE CIRCUIT

For your information, prayer and support

SAHAM HILLS

Services: every Sunday at 10.30 a.m.

Carol Service: 2.30 p.m. December 15th.

Covenant Service: 10.30 a.m. February 9th, and we will be joined by St. George's congregation.

Tinsel Fair: 10.00 – 12.00 noon November 23rd.

Coffee Morning: 10.00 – 11.30 a.m. March 1st.

BEETLEY

Services: 10.30 a.m. on the second and fourth Sundays.

6.00 p.m. on the first and third Sundays

Carol Service: 10.30 a.m. December 8th.

Big Sunday: 6.00 p.m. December 29th.

Covenant Service: 10.30 a.m. January 26th, led by Rev Derek.

Prayer Meetings: 9.30 a.m. December 4th, February 5th.

Drop-in: 2.00 – 3.00 p.m. December 4th, 18th, January 15th, February 5th, 19th.

Knit 'n' Natter: 2.00 – 3.00 p.m. January 22nd, February 26th.

Coffee Morning: 9.30 – 11.30 a.m. January 25th.

SPORLE

Services: 11.00 a.m. on the third Sunday.

FULMODESTON

Services: first and third Sundays at 2.30 p.m.

Carol Service: 2.30 p.m. December 15th, led by Beryl Flood.

Covenant Service: 2.30 p.m. January 5th, led by Rev Jonny Bell.

HOLT

Services: every Sunday at 11.00 a.m.

Informal Evening Services: 6.00 p.m. December 15th, January 19th, February 16th.

Friday Prayer Time: 9.30 a.m. on Fridays.

Holt Choir Practice: 7.00 p.m. December 13th, at Holt Community Centre, January 10th, 24th, February 7th, 21st.

Bible Study: 7.00 p.m. December 5th, 19th, January 16th, February 6th, 20th.

Afternoon Teas: 2.00 – 4.00 p.m. December 13th, (note one week earlier than usual), January 17th, February 21st.

Christmas Carol Singalong: 4.00 – 6.00 p.m. December 21st, with a cuppa and cake.

Carol Service: 11.00 a.m. December 22nd, including Christingle and will be dementia friendly.

Christmas Eve Communion: 11.30 p.m. December 24th.

Christmas Day Service: 9.30 a.m. led by Rev Jonny

Covenant Service: 11.00 a.m. January 12th.

WATTON

Services: every Sunday at 10.30 a.m. (mostly live streamed) and 6.30 p.m.

Carols by Candlelight: 7.00 p.m. December 24th.

Covenant Service: 10.30 a.m. January 5th, led by Rev Anne.

Coffee Mornings: 9.30 – 11.30 a.m. every Wednesday in the Methodist Centre, run by our Church volunteers or by other local groups..

Tuesdays at Two: 2.00 p.m. December 10th, January 14th, February 11th. All are welcome to a variety of activities in The Methodist Centre. Suitable for all abilities, with refreshments.

MATTISHALL

Services: every Sunday at 2.30 p.m.

Carol Service: 2.30 p.m. December 22nd, led by Rev Derek'

Covenant Service: 2.30 p.m January 5th, led y Rev Derek.

Mattishall Dementia Support Group – The Link: 10.00 a.m. – 12.00 noon December 3rd, 17th, January 7th, 21st, February 4th, 18th.

TITTLESHALL

Services: every Sunday at 9.30 a.m.

Coffee Mornings: 10.30 a.m. – 12.00 noon every Wednesday.

THE PILGRIM CHURCH Walsingham

Services followed by a meal together: 4.30 p.m. December 8th, January 12th, February 9th.

GARVESTONE

Services: every Sunday at 3.00 p.m.

Prayer Meetings: 2.00 p.m. December 20th, January 17th, February 21st.

Bible Study / Discussion Meetings:
Thursdays afternoons. Contact Andrew Durrant (01362 858033) for details.

Knit and Natter: 10.30 a.m. – 12.00 noon
December 10th, January 14th, February 11th.
For venues contact Lorna Folkes (01362 858391).

GREAT ELLINGHAM

Services: Usually fortnightly on Sundays in the Schoolroom at 2.30 pm.

Carol Service: 2.30 p.m. December 22nd, led by Rev Anne. Complete with a mince-pie.

Coffee Mornings: 10.00 – 11.00 a.m.
December 5th, January 2nd, February 6th.

GRESSENHALL

Services: Services on the 1st and 3rd Sundays of the month at 2.30.p.m. followed by light refreshments.

Carol Service: 2.30 p.m. December 15th.

Christmas Angels: from December 1st, - see page 20.

NEW HOLKHAM

Services: 2.30 p.m. last Sunday in the month

Carol Service: 2.30 p.m. December 8th, led by Beryl Flood.

Covenant Service: 2.30 p.m. January 26th, led by Rev Jonny.

LITCHAM

Services: every Sunday at 10.30 a.m.

Christmas Meal at The Bull: December 7th.
£11.50, please contact Stephen Lynn (01328 700978).

Carols, Coffee and Cake afternoon: 2.00 p.m. December 15th.

Covenant Service: 10.30 a.m. January 26th, led by Rev Anne.

Coffee Mornings: 10.30 a.m. – 12.00 noon every Thursday

Bible Study: 10.00 a.m. December 20th, January 17th, February 21st.

TOFTWOOD

Services: every Sunday at 11.00 a.m. followed by a Bring and Share Lunch on December 1st, January 5th, February 2nd.

Christingle Service: 11.00 a.m. December 15th.

Carol Service: 11.00 a.m. December 22nd.

Christmas Day Service: 9.30 a.m. December 25th.

Covenant Service: 11.00 a.m. January 12th, led by Rev Derek

Weekly Lace Group: 9.30 a.m. -12.00 noon on Mondays.

Messy Church: 3.30 – 5.00 p.m. December 17th, January 21st, February 18th.

Lunch & Linger: 12.00 noon – 2.30 p.m. December 11th, January 8th, February 12th.

Carpet Bowls: Thursdays 1.45 – 4.00 p.m.

Coffee Shop with Stalls: 10.00 a.m. – 12.00 noon December 7th, January 4th, February 1st.

DEREHAM

Trinity

Services: every Sunday at 10.45 a.m.

Carol Service: 10.45 a.m. December 15th, led by Rev Derek.

Covenant Service: 10.45 a.m. January 5th, led by Rev Derek.

Mid-week Communion: 10.30 a.m. (Contact Jacky Woor 01362 697860) December 12th, January 9th, February 13th.

Lunch Club: 12.00 noon. December 5th, January 2nd, February 6th. (Contact Rev Anne Richardson 01760 720858).

Coffee Mornings: 10.00 a.m. December 19th, January 16th, February 20th. (Contact Jacky Woor 01362 697860)

Cards and Chatter: 10.00 a.m. Next meeting February 27th. (Contact Sylvia Meredith 01362 693425)

Women's Own: 2.45 p.m. (Note new time) December 3rd, 10th, 17th. No further meetings until March. (Contact Olwyn Brough 01362 692799)

Coffee Morning at the home of Sylvia and Richard Meredith (12 Elvin Road 01362 693425): 10.00 a.m. – 12.00 noon January 30th.

WENDLING

Services: 10.30 a.m. first Sunday in the month

Christingle Service: 4.00 p.m. December 8th.

Carol Service: 10.30 a.m. December 15th.

Combined Covenant Service at Dereham: 10.45 a.m. January 19th.

Coffee Mornings: 10.30 a.m. – 12.00 noon tbc

SWAFFHAM

Services: every Sunday at 10.45 a.m.

"Hush, the noise": 10.45 a.m. December 1st, special service for the first Sunday in Advent.

Café Style Candle-lit Carol Service: time tbc December 18th.

Church Carol Service: 10.45 a.m. December 22nd.

Christmas Communion: 11.30 a.m. – this will be at the end of Drop-in and provide the chance for people who don't come to church to share in the Sacrament or receive a Blessing.

Christmas Day Service: 9.30 a.m.

Covenant Service: 10.45 a.m. January 12th, led by Rev Anne.

Leprosy Mission Sunday: 10.45 a.m. January 26th, guest Speaker Rev Mathew Henderson.

Power of Prayer Group: Friday 9.30 a.m. Praying for God's world. Phone 01760 722611 for the venue.

The Meeting Place drop-in: 10.00 a.m. – 12.00 noon every Tuesday, resumes after the Christmas break on January 14th. On February 11th, it will be followed by soup and sweets.

Coffee Morning and fundraising stall: 9.30 a.m. – 12.00 noon February 1st.

STIBBARD

Services: last Sunday in the month at 11.00 a.m. If this is the fifth Sunday the service will be followed by lunch.

Covenant Service: 11.00 a.m. January 26th, led by Rev Jonny.

Lunch @ The Centre: 12.30 p.m. December 11th, January 8th, February 12th.

Railway Film Afternoons with Tea and Cake: 2.30 p.m. December 7th, January 4th, February 1st.

Proverbial Prattle: 2.30 p.m. January 22nd, February 26th.

Circuit Choir Practice: 7.30 p.m. December 6th, January 3rd, 17th, 31st, February 14th.

Quiz Night @ The Centre: 7.00 p.m. for 7.30 p.m. February 28th.

WELLS

with Churches Together in Wells

Services: every Sunday at 11.00 a.m.

Carol Service: 11.00 a.m. December 22nd, led by Rev Elizabeth.

Covenant Service: 11.00 a.m. January 19th, led by Rev Jonny and joint with St. Nicholas.

Prayer and Praise: Every Wednesday at 10.30 a.m.

Community Lunch at the Congregational Hall: 12.00 noon every Monday

SCULTHORPE AND FAKENHAM

Services: every Sunday at 11.00 a.m.

Carol Service: 11.00 a.m. December 15th, led by Rev Jonny with a collection in aid of Action for Children.

CIRCUIT MEETING

26th February

Toftwood Methodist Church.

10.30 a.m.

HINGHAM

Services: every Sunday at 10.30 a.m.

Carol Service: 10.30 a.m. December 8th.

Covenant Service: 10.30 a.m. January 19th.
led by Rev Anne.

Coffee Shop with stalls: 10.00 a.m. – 12.00
noon December 7th, January 4th, February
1st.

Take-a-Break Tuesday Soup Lunch: 12.00
noon – 2.30 p.m. January 14th, February
11th.



HOLT METHODIST CHURCH AFTERNOON TEA

FRIDAY 18TH OCTOBER

2.00 - 4.00 PM

DELICIOUS HOMEMADE CAKES

TOMBOLA, BRIC-A-BRAC, BOOKS



**HOLT METHODIST
CHURCH**

AFTERNOON TEA

FRIDAY 17TH JANUARY

2 - 4 PM



**A DELICIOUS SELECTION OF
HOMEMADE CAKES
STALLS & TOMBOLA**



Christingle Service

11 am Sunday 22nd December

Holt Methodist Church
holt-methodist.org.uk

Raising money for All We Can,
the Methodist international relief
and development movement

**ALL
WE
CAN**

All We Can is the working title of The Relief and Development Fund of The Methodist Church.
Charity Number: 291691



**HOLT METHODIST
CHURCH**

AFTERNOON TEA

FRIDAY 21ST FEBRUARY

2 - 4 PM



**A DELICIOUS SELECTION OF
HOMEMADE CAKES
STALLS & TOMBOLA**



DATES FOR PRAYER AND SUPPORT

Continued from page 30.

Feb 18	10.00-12.00	Mattishall Dementia Support Group –The Link	Mattishall MC
Feb 18	3.30-5.00	Messy Church	Toftwood MC
Feb 19	2.00-3.00	Drop-in	Beetley MC
Feb 20	10.00 am	Coffee Morning	Dereham Trinity MC
Feb 20	7.00 pm	Bible Study	Holt MC
Feb 21	10.00 am	Bible Study	Litcham MC
Feb 21	2.00 pm	Prayer Meeting	Garvestone MC
Feb 21	2.00-4.00	Afternoon Tea	Holt MC
Feb 21	7.00 pm	Holt Choir Practice	Holt MC
Feb 25	10.00-12.00	Coffee Moring in aid of Mercy Ships	Helhoughton Village Hall
Feb 26	10.30 am	CIRCUIT MEETING	Toftwood MC
Feb 26	2.00-3.00	Knit 'n' Natter	Beetley MC
Feb 26	2.30 pm	Proverbial Prattle	Stibbard M Ch Centre
Feb 27	10.00 am	Cards and Chatter	Dereham MC
Feb 28	7.00 pm	Quiz Night @ The Centre	Stibbard M Ch Centre

SEEK THE LORD WHILE HE MAY BE FOUND
Isaiah 55:6

REGULAR Weekly dates for prayer Further details elsewhere in *The Link*.

Mon	8.45 am	Morning Prayer	Circuit (on Zoom)
Mon	9.30-12.00	Weekly Lace Group	Toftwood MC
Mon	12.00 noon	Community Lunch in the Congregational Hall	Wells
Mon	7.00-8.30	Guides	Toftwood MC
Tues	10.00-12.00	The Meeting Place Drop-in resumes Jan 14th	Swaffham MC
Tues	2.45 pm	Women's Own	Dereham Trinity MC
Wed	8.45 am	Open Prayer	Circuit (on Zoom)
Wed	9.30 am	Coffee Shop	Watton M Ch Centre
Wed	10.30-12.00	Coffee Morning	Tittleshall MC
Wed	10.30 am	Prayer and Praise	Wells MC
Thurs	10.30-12.00	Coffee Morning	Litcham MC
Thurs	1.45-4.00	Carpet Bowls	Toftwood MC
Thurs	2.00 pm	Ecumenical Bible Study and Discussion Group	Garvestone / Mattishall MC
Fri	9.30 am	Friday Prayer Time	Holt MC
Fri	9.30 am	Power of Prayer Group	Swaffham MC
Sat	8.45 am	Praying with the Methodist Church and for the Circuit	Circuit (on Zoom)

DATES FOR PRAYER AND SUPPORT

Continued from page 31.

Jan 16	7.00 pm	Bible Study	Holt MC
Jan 17	10.00 am	Bible Study	Litcham MC
Jan 17	2.00 pm	Prayer Meeting	Garvestone MC
Jan 17	2.00-4.00	Afternoon Tea	Holt MC
Jan 17	7.30 pm	Circuit Choir Practice	Stibbard M Ch Centre
Jan 19	10.30 a.m.	Covenant Service led by Rev Anne	Hingham MC
Jan 19	10.45 am	Combined Covenant Service at Dereham	Wendling MC
Jan 18	11.00 am	Covenant Service led by Rev Jonny	Wells MC joint with St Nicholas
Jan 19	6.00 pm	Informal Evening Service	Holt MC
Jan 21	10.00-12.00	Mattishall Dementia Support Group –The Link	Mattishall MC
Jan 21	3.30-5.00	Messy Church	Toftwood MC
Jan 22	2.00-3.00	Knit 'n' Natter	Beetley MC
Jan 22	2.30 pm	Proverbial Prattle	Stibbard M Ch Centre
Jan 24	7.00 pm	Holt Choir Practice	Holt MC
Jan 25	9.30-11.30	Coffee Morning	Beetley MC
Jan 26	10.30 am	Covenant Service led by Rev Derek.	Beetley MC
Jan 26	10.30 am	Covenant Service led by Rev Anne	Litcham MC
Jan 26	10.45 am	Leprosy Mission Sunday	Swaffham MC
Jan 26	11.00 am	Covenant Service led by Rev Jonny	Stibbard MC
Jan 26	2.30 p.m.	Covenant Service led by Rev Jonny	New Holkham MC
Jan 28	10.00-12.00	Coffee Morning is aid of the MND Association	Helhoughton Village Hall
Jan 30	10.00-12.00	Coffee Morning	12 Elvin Road 01362 693425
Jan 31	7.30 pm	Circuit Choir Practice	Stibbard M Ch Centre
Feb 1	9.30-12.00	Coffee Morning and Fundraising Stall	Swaffham MC
Feb 1	10.00-12.00	Coffee Shop with stalls	Hingham MC
Feb 1	10.00-12.00	Coffee Shop with Stalls	Toftwood MC
Feb 1	2.30 pm	Railway Film Afternoon with Tea and Cake	Stibbard M Ch Centre
Feb 2	11.00 am	Service followed by lunch	Toftwood MC
Feb 4	10.00-12.00	Mattishall Dementia Support Group –The Link	Mattishall MC
Feb 5	9.30 am	Prayer Meeting	Beetley MC
Feb 5	2.00-3.00	Drop-in	Beetley MC
Feb 6	10.00-11.00	Coffee Morning	Great Ellingham MC
Feb 6	12.00 noon	Lunch Club	Dereham Trinity MC
Feb 6	7.00 pm	Bible Study	Holt MC
Feb 7	7.00 pm	Holt Choir Practice	Holt MC
Feb 9	10.30 am	Covenant Service	Saham Hills MC joint with St. George's
Feb 9	4.30 pm	Service followed by refreshments.	Walsingham MC
Feb 11	10.30-12.00	Knit and Natter	Garvestone MC
Feb 11	12.00-2.30	Take-a-Break Tuesday Soup Lunch	Hingham MC
Feb 11	2.00 pm	Tuesdays at Two	Watton M Ch Centre
Feb 12	12.00-2.30	Lunch and Linger	Toftwood MC
Feb 12	12.30 pm	Lunch @ The Centre	Stibbard M Ch Centre
Feb 13	10.30 am	Mid-week Communion	Dereham Trinity MC
Feb 14	7.30 pm	Circuit Choir Practice	Stibbard M Ch Centre
Feb 16	6.00 pm	Informal Evening Service	Holt MC

DATES FOR PRAYER AND SUPPORT

Continued from page 32.

Dec 18	2.00-3.00	Drop-in	Beetley MC
Dec 18	time tbc	Café Style Candle-lit Carol Service	Swaffham MC
Dec 19	10.00 am	Coffee Morning	Dereham Trinity MC
Dec 19	7.00 pm	Bible Study	Holt MC
Dec 20	10.00 am	Bible Study	Litcham MC
Dec 20	2.00 pm	Prayer Meeting	Garvestone MC
Dec 21	4.00-6.00	Christmas Carol Singalong (includes refreshments)	Holt MC
Dec 22	10.45 am	Church Carol Service	Swaffham MC
Dec 22	11.00 am	Carol Service including Christingle and dementia friendly	Holt MC
Dec 22	11.00 am	Carol Service	Toftwood MC
Dec 22	11.00 am	Carol Service led by Rev Elizabeth	Wells MC
Dec 22	2.30 pm	Carol Service led by Rev Anne	Great Ellingham MC
Dec 22	2.30 pm	Carol Service led by Rev Derek	Mattishall MC
Dec 24	7.00 pm	Carols by Candlelight	Watton MC
Dec 24	11.30 pm	Christmas Eve Communion	Holt MC
Dec 25	9.30 am	Christmas Day Service led by Rev Jonny	Holt MC
Dec 25	9.30 am	Christmas Day Service	Swaffham MC
Dec 25	9.30 am	Christmas Day Service	Toftwood MC
Dec 29	as arranged	BIG SUNDAY	All churches
Jan 2	10.00-11.00	Coffee Morning	Great Ellingham MC
Jan 2	12.00 noon	Lunch Club	Dereham Trinity MC
Jan 3	7.30 pm	Circuit Choir Practice	Stibbard M Ch Centre
Jan 4	10.00-12.00	Coffee Shop with stalls	Hingham MC
Jan 4	10.00-12.00	Coffee Shop with Stalls	Toftwood MC
Jan 4	2.30 pm	Railway Film Afternoon with Tea and Cake	Stibbard M Ch Centre
Jan 5	10.40 am	Covenant Service led by Rev Anne	Watton MC
Jan 5	10.45 am	Covenant Service led by Rev Derek.	Dereham Trinity MC
Jan 5	11.00 am	Service followed by lunch	Toftwood MC
Jan 5	2.30 pm	Covenant Service led by Rev Jonny	Fulmodeston MC
Jan 5	2.30 pm	Covenant Service led by Rev Derek	Mattishall MC
Jan 7	10.00-12.00	Mattishall Dementia Support Group –The Link	Mattishall MC
Jan 8	12.00-2.30	Lunch and Linger	Toftwood MC
Jan 8	12.30 pm	Lunch @ The Centre	Stibbard M Ch Centre
Jan 9	10.30 am	Mid-week Communion	Dereham Trinity MC
Jan 10	7.00 pm	Holt Choir Practice	Holt MC
Jan 12	10.45 am	Covenant Service led by Rev Anne	Swaffham MC
Jan 12	11.00 am	Covenant Service led by Rev Jonny	Holt MC
Jan 12	11.00 am	Covenant Service led by Rev Derek	Toftwood MC
Jan 12	4.30 pm	Service followed by refreshments.	Walsingham MC
Jan 14	10.30-12.00	Knit and Natter	Garvestone MC
Jan 14	12.00-2.30	Take-a-Break Tuesday Soup Lunch	Hingham MC
Jan 14	2.00 pm	Tuesdays at Two	Watton M Ch Centre
Jan 15	2.00-3.00	Drop-in	Beetley MC
Jan 16	10.00 am	Coffee Morning	Dereham Trinity MC

DATES FOR YOUR PRAYERS AND SUPPORT

Further details on pages 29-31.

Dec 1	10.45 am	"Hush the Noise", a service for the first Sunday in Advent	Swaffham MC
Dec 1	11.00 am	Service followed by lunch	Toftwood MC
Dec 3	10.00-12.00	Mattishall Dementia Support Group –The Link	Mattishall MC
Dec 3	2.45 pm	Women's Own	Dereham MC
Dec 4	9.30 am	Prayer Meeting	Beetley MC
Dec 4	2.00-3.00	Drop-in	Beetley MC
Dec 5	10.00-11.00	Coffee Morning	Great Ellingham MC
Dec 5	12.00 noon	Lunch Club	Dereham Trinity MC
Dec 5	7.00 pm	Bible Study	Holt MC
Dec 6	7.30 pm	Circuit Choir Practice	Stibbard M Ch Centre
Dec 7	10.00-12.00	Coffee Morning in in of Mid-Norfolk Food-bank	Helhoughton Village Hall
Dec 7	10.00-12.00	Coffee Shop with stalls	Hingham MC
Dec 7	10.00-12.00	Coffee Shop with Stalls	Toftwood MC
Dec 7	tbc	Christmas Meal at the Bull	Litcham MC
Dec 7	2.30 pm	Railway Film Afternoon with Tea and Cake	Stibbard M Ch Centre
Dec 8	10.00 am	Carol Service	Hingham MC
Dec 8	10.30am	Carol Service	Beetley MC
Dec 8	2.30 pm	Carol Service led by Beryl Flood	New Holkham MC
Dec 8	4.00 p,	Christingle Service led by Rev Derek	Wendling MC
Dec 8	4.30 pm	Service followed by refreshments.	Walsingham MC
Dex 10	10.30-12.00	Knit and Natter	Garvestone MC
Dec 10	2.00 pm	Tuesdays at Two	Watton M Ch Centre
Dec 10	2.45 pm	Women's Own	Dereham MC
Dec 11	12.00-2.30	Lunch and Linger	Toftwood MC
Dec 11	12.30 pm	Lunch @ The Centre	Stibbard M Ch Centre
Dec 12	10.30 am	Mid-week Communion	Dereham Trinity MC
Dec 13	2.00-4.00	Afternoon Tea	Holt MC
Dec 13	7.00 pm	Holt Choir	Holt Community Centre
Dec 15	10.30 a.	Carol Service	Wendling MC
Dec 15	10.45 am	Carol Service led by Rev Derek	Dereham Trinity MC
Dec 15	11.00 am	Carol Service led by Rev Jonny	Sculthorpe & Fakenham MC
Dec 15	11.00 am	Christingle Service	Toftwood MC
Dec 15	2.00 pm	Carols, Coffee and Cake Afternoon	Litcham MC
Dec 15	2.30 pm	Carol Service led by Beryl Flood	Fulmodeston MC
Dec 15	2.30 pm	Carol Service	Gressenhall MC
Dec 15	2.30pm	Carol Service	Saham Hills MC
Dec 15	6.00 pm	Informal Evening Service	Holt MC
Dec 17	10.00-12.00	Mattishall Dementia Support Group –The Link	Mattishall MC
Dec 17	12.00 noon	Christmas Communion(following Drop-in)	Swaffham MC
Dec 17	2.45 pm	Women's Own	Dereham MC
Dec 17	3.30-5.00	Messy Church	Toftwood MC