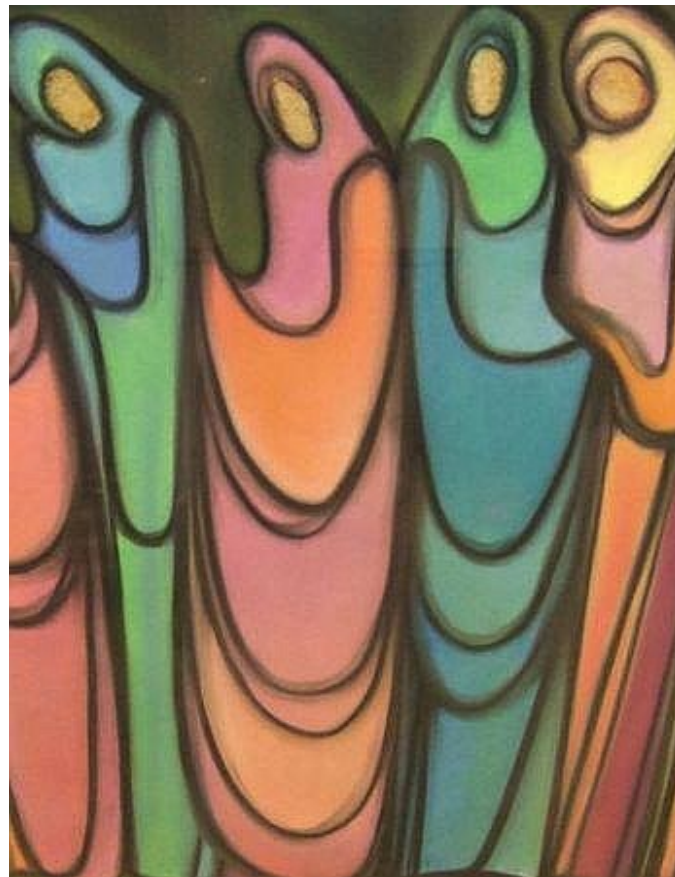


# THE LINK

Includes the Circuit Plan

Issue 53 March / May 2022



## **PILGRIM ASSEMBLY**

Discovered in Blakeney Chapel and to be used as the logo for The Pilgrim Church

<b>CIRCUIT SUPERINTENDENT:</b>	Rev. Jacqui Horton	01760 720858
<b>CIRCUIT MINISTERS:</b>	Rev. Cliff Shanganya	01328 862174
	Rev. Anne Richardson	07811 888019
	Deacon Jen Woodfin	01760 720858
<b>PIONEER RURAL CHURCH PLANTER:</b>	Mrs Samantha Parfitt	07725 077810
<b>CIRCUIT ADMINISTRATOR:</b>	Mrs Mandy Etherington	07736 467831
	e-mail <a href="mailto:centralnorfolk@outlook.com">centralnorfolk@outlook.com</a>	
<b>CIRCUIT SAFEGUARDING OFFICER:</b>	Mrs Aileen Fox	01328 856494

See page 3 for deadlines and Editor's contact information

# MINISTER'S LETTER

Dear Friends,

I am writing this towards the end of January with the sun streaming through the window. It looks all bright outside and one could think that Spring is on its way. But I just don't know, we may be facing a spell of very cold, snowy weather before the spring truly comes. We can, though, be sure that the Spring will come, there will be new life. God's creation is a marvellous thing. It is what the world needs, and it is what we need. The rhythm and pattern of the seasons gives us times of quiet and rest, times of renewal and new life, times of exuberance and joy, and times of reaping and harvest.



The last two years have been a challenging time in many ways. They have certainly changed the rhythm and pattern of all our lives. For some it has been a time of immense stress and pressure and extreme busyness. For others there has also been a good deal of stress caused by not being able to be busy in their work – for instance, businesses not being able to be open. For others it has been a time of retreat, a time of quiet and, possibly, solitude and loneliness. For many there has been a time of great loss and bereavement. Just as we wait for the warmth of Spring without knowing when that will be, we have also had to wait for the worst of Covid 19 to pass. So, now, we look to the future and we can look forward with hope, knowing that God will be with us and will give us new life, in creation and in our lives.

Over the last two years there have been many successful circuit initiatives. One of which has been the Virtual Open Gardens. On the first occasion in 2020 we had photographs of gardens in June and for the second time we shared photos in July. This year, I thought we would celebrate the transition from Winter, through to Spring. So, we will collect photos throughout February, March and April. It would be great if we had even more gardens on display. So, please, do email pictures, whether of a single flower or a wider scene and they will be displayed on our website. Let us all celebrate the new life that God gives us each and every year.

*Deacon Jen Woodfin*

PS Please send your photos to [jenwoodfin@btinternet.com](mailto:jenwoodfin@btinternet.com).

# THE LINK

We live in exciting times—and also difficult times. So what’s new; in one sense nothing in another sense everything. We live lives in which God is in control even if, at times, we may feel that everything is out of control. We are recovering from the biggest pandemic to affect us personally for over a century. Yet I stand by what I said—the times may be difficult but also exciting.

As you read through this edition of The Link you will find all kinds of green shoots in various stages of growing amongst our churches. For example by the time this edition is published Holt will be well started on an Alpha course (but there is still plenty of time and opportunity to join in—see page 8). As another example Watton are well into the planning stages of their 95th anniversary (see page 16). And that’s before we look at what is happening at The Hive (pages 12-13) and The Pilgrim Church (pages 10-11). All these events get noticed.

People realise we are there and perhaps wonder why we regard God as important. That’s a way to introduce people to a relationship with God. So what’s your church planning?

This edition also, sadly, has to report on the passing of Rev Colin Garwood who spent many decades in the service of his Lord, most recently in all his support for those at Wells. We assure Pat and his family of our prayers but also rejoice that he is at peace (*shalom*) in Jesus’ presence.

One last thought. So often nowadays we hear people lamenting the lack of youth work in our churches. Well, maybe...but see page 18 and it may make you think, and pray, differently (and no peeking at the answers to the question in the article which are printed below!)

Keep praying.

Tony Hey

---

## Answer to the question on page 18

This relates to the time you milk a cow. When virtually all of us lived in an agricultural community—well before Methodism was founded—Sunday may have been a day of rest but cows still had to be milked. You get up and do the milking, attend Matins, after lunch do the afternoon milking and then attend Evensong. The Church has always been slow to move with the times!

# DEADLINE

**FOR THE  
June—August  
EDITION**

**SATURDAY APRIL 30th**

*Please include details of activities  
up to the end of August*

## CONTACT DETAILS

Please send information for  
publication to  
Tony Hey

E-mail: [t.hey@btinternet.com](mailto:t.hey@btinternet.com)

Phone: 01263 713302

Address: 4 Burrell Close  
HOLT  
NR25 6DT

# Rev COLIN

1927 -



Colin's life of dedication to God began on 1<sup>st</sup> September 1927 – 94 years ago – in Chelmsford in Essex. At the age of 13, Colin's life changed forever when he first locked eyes with Betty - Elizabeth Finch - at the local swimming pool. They became childhood sweethearts.

Upon leaving school, Colin started a career in accountancy, but shortly felt a calling to the ministry. This was put on hold upon turning 18 just after the end of World War 2, as Colin was called up for national service. Three years spent in the RAF saw him drafted to India during the time of partition, eventually transferring to the newly-created state of Pakistan. What memories he told of his time there – particularly playing the role of chaplain, connecting the junior and senior officers together in shared spirituality, and developing skills that would underpin his lifetime of ministry and pastorship.

Returning to the UK, on Colin's 21<sup>st</sup> birthday he and Betty got engaged, and shortly after Colin began four years of training for the ministry at New College in London. June 1952, nearly 70 years ago, was a particularly eventful month in Colin's life. Aged 24, on June 21<sup>st</sup>, Colin was ordained into the ministry and inducted into his first pastorate at Staines Congregational Church in Middlesex. Then, just a week later, Colin and Betty got married!

At Staines, Colin had the amazing experience of overseeing the building of new Church premises on a new site. What a learning curve for a new young minister! The Church went from strength-to-strength and still thrives as one of the leading churches in the Evangelical Fellowship of Congregational Churches.

Colin's call to Cliff Town, Southend in 1961, led to the opportunity to develop new forms of ministry. Being in the town centre and near the seafront provided exciting challenges. Everything suddenly became big! Colin started a Youth Club and found himself trying to cope with 350 young people inside, and another 300 queuing outside! Colin started a Senior Men's Forum and within weeks numbered 200. Not to be outdone, Betty started a Ladies Forum which soon *exceeded* 200 members! Biggest of all, however, was the decision to move the morning service to the Cliffs Bandstage each summer, joining a neighbouring small Baptist Church which had pioneered the idea. It wasn't long before anywhere between 600 and 1,000 people, many with no church connection, gathered each Sunday for the outdoor Service, reaching 2,000 plus in Carnival Week!

It was in Southend that Colin became a member of the Joint Committee tasked with bringing the United Reformed Church into being, bringing together the two denominations, the *Presbyterian Church of England* and the *Congregational Church in England and Wales*, to form the URC we know today. Colin talked of the shared sense of purpose in avoiding simply creating a union of two old churches, but rather an offspring from such a union.

In 1975, a new calling beckoned, and Colin and Betty moved to St John's United Reformed Church in Bexhill-on-Sea, commencing 17 years of ministry there. Building on the experience at Southend's bandstand, Colin led the open-air singing, finding himself simultaneously playing the role of organiser, musical director, and conductor. Crowds gathered each Sunday evening, regularly reaching over 1,000. The highlight came in 1984 when the BBC arranged to record "Songs of Praise".

# GARWOOD

2022

Colin and Betty retired to Fakenham in 1992 and Colin settled in quickly to the local Methodist Circuit. In 1996, Colin was inducted as minister for Fakenham Methodist Church for one year, retiring for the second time on his 70<sup>th</sup> birthday! Colin also found himself back in his conductor's role when he was asked to re-form the Methodist Circuit Choir for a "Songs of Praise" arranged by the Methodist Circuit at the Thursford Collection each year. Following a period of ill health and disability, Colin and Betty transferred their membership, to Wells-next-the-Sea. In 2002, a large crowd gathered to celebrate Colin and Betty's golden wedding anniversary. Sadly, Betty died just a week later, but they were both delighted to have reached this milestone.

Colin and Pat first met as couples when Colin and Betty transferred their church membership to Wells and became good friends. Pat and Blag were at Colin and Betty's Golden wedding and Colin was very supportive during Blag's illness and was actually present at his death. Colin conducted the circuit choir and Pat was Music Secretary, so their friendship deepened. They became engaged and married in May 2006 at Wells Methodist Church.

Whilst in Wells, Colin remained active in his preaching and made an enormous contribution to the life of Wells Church and the wider community. He was very involved in "*Churches Together in Wells and District*" and was instrumental in working towards greater unity, a cause he cared very deeply about. In recent years, Colin's physical health began fading but his mind stayed as sharp, inquisitive and faithful as ever. He continued to preach from his electric scooter, most recently delivering the sermon on 2<sup>nd</sup> of January this year, in the 70th year of his ordination—remarkable!

Colin died peacefully on 22<sup>nd</sup> January after a very short illness. I know Colin was immensely proud of what he achieved in his 94 years, had great love for his family and the congregations and communities he served, was loved by many, touched so many lives with his selfless commitment to others, and I'm sure will have heard the words "*well done, good and faithful servant*".

*This is an abridged version of the eulogy prepared for Colin's Thanksgiving Service  
by his grandson, James Alexander*

---

## *A personal recollection from Lillian Timms*

Some 50 years ago together with the family we visited a U.R.C. in Southend where Colin was Minister. It was Trinity Sunday, the Church was packed and a lot of young people were in the congregation. I cannot remember the reason for our visit as our home church was 25 miles away but it was probably a District event for young people. Colin led the Service and gave the address. He asked the young people to close their eyes and imagine themselves walking through the countryside appreciating its beauty. He shared with them the things that he was seeing and told them about the brook, the stream and the river, all having the same water, coming from the same source but flowing in different channels, with the water flowing at different speeds and in so doing explained The Trinity.

My daughter was 12 years old at the time and although I did not know this until much later it had quite an effect upon her. Now as an accredited lay preacher whenever she leads worship on Trinity Sunday she shares this story and said it is as vivid to her now as it was all those years ago. I am so pleased that I was able to share this with Colin on one of his many visits to Blakeney He was a powerful preacher and many will remember him preaching from the bandstand on the beach at Southend.

*If anyone else has a recollection of Colin they would like to share please send it to the Editor and it will be published in the next edition.*



THANKYOU

Stephen

### **Part Five:.....another door opens**

I have been wondering whether I ought to be calling this part of my musical journey 'Part two of part four', but eventually decide to stick with 'Part Five' as I thought it would be less confusing (or not, as the case may be!).

I ended last time with Sheila and myself, along with our friend Frances Singleterry, forming The Open Doors, and in this instalment I am going to share with you some of the adventures we shared along the musical highway in the 1980's and 90's. Unfortunately the only reference notes I have are those located in my sometimes leaky brain, so there will be little sense of chronology in these stories, but I think that this will not detract in any way.

One of the biggest obstacles we had to confront was geography, with Frances living in Kings Lynn and we in Litcham. Weekend bookings were not usually too much of a problem, but anything during the working week could mean a mad after work dash, and on more than one occasion an en-route farmer's field would have to provide makeshift toilet facilities, leading to the odd unexpected encounter with stinging nettles or other similar hazards!

On occasion we would head off to 'parts unknown', and of course this was way before the advent of Sat-nav, so it would be down to the ever trusty AA road atlas to get us to our destination. One particularly memorable occasion led us to the Cambridgeshire location of Euximoor Fen. (It's pronounced Exmoor and is near March. The chapel literally sits on the road to nowhere as you will see if you locate it on the map. As we were rather trepidatious about how long it might take us to get there we set off early, and when we arrived there was no one to be seen. Moreover there was hardly even a building to be seen, and you can see for a long way in the flat lands of the Fens. Eventually the Steward arrived, and ushered us in. By the time we had set up, a family group had arrived but no one else. We were taken into the adjoining Sunday School room for Pre-service prayers, and were amazed when we went back into the chapel to find it packed. After the service we learned that the congregation consisted of families from the scattered farming community for miles around, and this was the big weekly get together. I don't think I have ever seen such a queue of cars outside a chapel. As a footnote to this story, shortly after our visit the roof fell in, leading to the chapel's closure. It wasn't us guv, honest!

Another occasion we greatly enjoyed was sharing in the Downham Market area St. George's Day Parade service for the Scouting movement. Our friend John Seaman, of whom I have written previously, was a Scout Leader, and invited us to take part on a few occasions. It was really thrilling to see the Parish Church in Downham filled to bursting with hundreds of enthusiastic youngsters singing their hearts out.

One of our most memorable afternoons was the day the accompanying photograph was taken, and which subsequently appeared in the Eastern Daily Press with the headline 'Bishop to the rescue'.

# FOR THE MUSIC

Lynn



The building is the famous Red Mount Chapel in the Walks in Kings Lynn, and the occasion was the open air service which used to open the Kings Lynn Festival Fringe. I can't remember the date, but it was sometime during the late eighties. It was a lovely sunny day, although a little blustery, and a sudden gust of wind threatened to blow our music stand over. Cue the Rt. Rev. Maurice Wood, the Bishop of Norwich, who held the stand for us for the duration of our segment. I was also



quoted in the paper for quipping that I never wanted to hear anyone say that Bishops were of no use to anyone. I think that the loudest laugh came from Bishop Maurice. A lovely man and a real character.

Probably the strangest booking we ever had happened in 1989. Each year, in August, we used to be invited to take an evening service at Wells chapel. This was in the days of John and Mary Petchey. After the service a young lady approached me and asked where we would go to take a service. Completely forgetting the wise adage, 'Engage brain before opening mouth', I said we would go anywhere. Then she asked if we would be willing to go to Goffs Oak, to which I replied, again in the wrong order, 'Of course we would. Where's Goffs Oak,?'. When she said it was the last place on the A10 before you get to the M25 I nearly fell through the floor. Anyway, we agreed to see what we could work out, and after a few telephone calls over the next week, we agreed to take their mid-week Fellowship. At the time I was working for Aldiss in Fakenham, and managed to arrange to finish work at 4.30 on a Wednesday afternoon. I picked Sheila up and we met Frances in Swaffham, then set off Southwards arriving at Goffs Oak at around 7.15. We led the evening then set off for home, dropping Frances off at her house in Kings Lynn on the stroke of midnight. I think I got through the next day at work on auto-pilot.

We were also carrying on our 'second-string' of secular engagements, performing our cabaret style evenings at events such as church parties and Harvest Suppers.

I remember particularly a Harvest Supper at Harpley village hall which was organised by Little Massingham Parish Church. What made it so memorable was that it was the only occasion I have ever been asked to call for last orders at the bar! Another memorable occasion was at Stoke Ferry village hall where the Harvest Supper had taken longer than

[Continued on page 8]

# THANKYOU FOR THE MUSIC

[Continued from page 7]

anticipated. We were half way through our set, when we were virtually drowned out by rattling crockery as they decided to serve tea as their booking time on the hall was almost up. We decided that we were fighting a losing battle and quickly packed our things away and quietly left without anyone seeming to notice.

There were plenty of ups to set alongside these downs. One of our favourite places to perform was at Great Cressingham where we first encountered the formidable force that was Emily Rutterford's catering army. It was fantastic to see all the food for a full home cooked meal appearing from all corners of the village.

Another venture we embarked on was to produce a cassette tape, (remember them?), of some of our original songs, We transformed Frances' front room into a mini recording studio, and then had the bulk tapes professionally produced. There may still be some copies lurking around in cupboards somewhere.

Unfortunately Frances' health began to deteriorate, and we were not able to take on engagements to the same degree.

We never actually formally disbanded, and Frances and her husband Nigel are still our dear friends, and we still reminisce over the good times we had carrying the Good News of Jesus, and the hundreds, if not thousands of people we had the honour of playing to over the years.

They are times we will never forget, nor stop giving thanks for.

---

Holt Methodist Church 

## Your Alpha invitation

**Alpha is for anyone who wants to get the most out of their life.**

**Alpha explores the Christian faith in an informal and friendly way that has helped countless people grow closer to God.**

**Whether you have just started your journey of faith or have been on the road for some time, Alpha is a great way to learn alongside others like you.**



**6pm on Wednesday Evenings.  
Starting on 9th February until 4th of May 2022**

**JOIN US NOW**

To join us or for more information please talk to Mrs Joseyln Bunting – Tel: 01263 712068 or  
The Minister : Rev Cliff Shanganya – Tel: 01328 862174



# ANOTHER SOUPER IDEA AT HINGHAM?

The latest fundraising event took place at Hingham on Tuesday 20<sup>th</sup> January. We hope this will become a regular souper idea through the winter months. Entitled Take-a-Break-Tuesday, this idea was the brain wave of Doreen



Haynes, who suggested holding a lunch time soup event followed by the screening of a film.



(recalling some Norfolk Squit).

Those attending, in total about 20, had plenty of positive comments and a request for more.

Still on the fundraising front, we are pleased to be able to once again hold our Coffeshop Mornings on the first Saturday of the month. We have had to re-think the layout of our stalls and tables to conform with Covid restrictions, but are now getting used to the new layouts.



## FAITH AND FEELINGS

Submitted by Hilary Pegg

Why are you downcast, O my soul?  
Why so disturbed within me?  
Put your hope in God,  
for I will yet praise him,  
my Saviour and my God.

*Psalm 42 v. 5*

Then we will no longer be infants, tossed back and forth by the waves, and blown here and there by every wind of teaching and by the cunning and craftiness of men in their deceitful scheming. Instead, speaking the truth in love, we will in all things grow up into him who is the Head, that is, Christ. From him the whole body, joined and held together by every supporting ligament, grows and builds itself up in love, as each part does its work.

*Ephesians 4.:14-16*



# The Pilgrim Methodist Church

Blakeney  Walsingham

## Blakeney

*From Sam Parfitt:* I had a very busy Advent season in Blakeney and Walsingham, with a Community Carol Service at Walsingham and a Christmas Centrepiece Workshop and Carols in the Courtyard at Blakeney. They felt quite fragile in a way, as

the rise in cases of the Omicron Covid-19 variant meant that they might not go ahead. However, after much



prayerful discussion, they did go ahead (there was another craft event planned at Blakeney which we did decide to cancel). Although a smaller number of people than expected came, it was lovely to join together with others and celebrate in a way that we hadn't been able to for two years. To share laughter, joy and spread something of the gospel message of love was a real Christmas gift.

Another gift was coming together with other Christian denominations in Blakeney during January for a service of Christian Unity. The theme of the service was "We saw His Star in the East". Rev Jacqui preached and shared her reflections about how the wise men are represented in Nativity sets and how this relates to us as Christians who may at times see and think very differently about things, but our differences melt away when we kneel together at the foot of the manger. After the service we enjoyed a lovely hot cup of coffee in the churchyard.



In January we also collected our largest donation yet for the Cromer and District Foodbank at Blakeney, which filled the shelves and the back of my car! In the Community Garden the daffodils, primroses and winter pansies that were very kindly donated have given us a colourful winter display (albeit somewhat early for the daffodils!!)

In early December we said a sad farewell to Margery Grey, who was a member of Blakeney Methodist Church for all of her 99 years. A testament to Margery's life of love and caring for the people of the village was evident in the fullness of the Parish Church where the service of thanksgiving for her life was held. My lasting memories of Margery include the time when I realised that she had never missed a Church Council meeting and I told her how extraordinary I thought that was. Her reply was "it's not that difficult my darlin', you just keep turning up".

So, with that memory with me, I'm looking forward to keeping turning up this quarter and seeing where God leads us. Although we are still finalising the shape of things to come for the next year, I have a real sense that God is with us and am excited at our continued journey. At Walsingham we look forward to opening the chapel to visitors and school visits again, with revamped displays and Norma Virgoe's new book about the history of Walsingham Methodist Church. At Blakeney, we look forward to a special service of dedication on Sunday 20th March at 3pm, followed by afternoon tea. We'll be dedicating an artwork that was given to the chapel that we've had re-framed and launching this year's programme. At the time of writing, we're currently finalising the programme but you can find up to date information on our facebook pages, websites or by becoming a Friend of Blakeney, or a Friend of Walsingham (or both!) and we'll keep you updated on all of our plans.

---

## Walsingham

*From Glyn Constantine:* The last three months have been relatively quiet for us after the visitor season finished and with Covid again intervening.

That said we have held monthly services with an additional carol service in December which Jacquiled. I hope you'll agree that the atmosphere was beautiful.



When we meet together each month it is wonderful to see the chapel come alive as we worship and

sing together and then share a meal. There really is a great sense of fellowship and singing with the backing from a real pipe organ makes a lovely change. Anyone is more than welcome to join us for the service or to stay for food.

Our next services at 4.30 p.m. will be on:

March 13<sup>th</sup>      April 3<sup>rd</sup>      May 8<sup>th</sup>

By this plan it should be lighter in the afternoons and evenings.

School visits continue and Sam will once again be opening the chapel to visitors after Easter. If you would like to visit at other times please give her a ring.

In addition the fortnightly Bible Studies on Zoom continue on Mondays at 7.15 p.m. for an hour. If you would to join us you are very welcome. Give Glyn Constantine a ring or email for the dates and the joining instructions.

# Winter Wellbeing

Be good to yourself at **The Hive** with our programme of life-affirming activities

Friday February 18 at 3.00pm

**Celtic Journeys  
'stillness'**



Saturday February 26  
at 2.00pm

**Yoga to breathe and stretch**

Friday March 4  
at 3.00pm

**Celtic Journeys  
'reflection'**

Saturday March 12 at 11.00am  
& 2.00pm (walk)

**The mystery of maps**

Monday March 14  
at 11.00am

**Coping with change**

Friday March 18 at 3.00pm

**Celtic Journeys  
'blessings'**

Sunday March 20  
at 3.00pm

**Music for Body, Mind and Soul**

Scan the QR code to find out more



**THE HIVE**  
CREATIVITY - SPIRITUALITY - WELL-BEING

Chalk Hill, Great Cressingham, Norfolk IP25 6NP  
Find us with What3Words: winds.fuzzy.stages  
E: thehiveplace@gmail.com T: 07976 286 645

# Can you hear the buzz at The Hive?

After a very short time of 'hibernation', The Hive is about to get its buzz back! Here is the poster for our new series, promoting Well-being through the winter and early spring months of February and March.

As we start the year, we are very aware that there will be plenty of change as we put away our masks and begin to mingle more freely. Kate Jones who provides services through Well-being Norfolk and Waveney, will be leading a workshop on how we think about change, ways to cope with change and some very useful tips to support ourselves through times of change.

Susan and David who are both part of the core team at The Hive will once again share their own particular skills and interests. Susan is a much sought-after Yoga teacher who gives regular sessions at Swaffham and Dereham. Susan will be giving a yoga session on breathing and stretching, including a meditation.

In the three years that David and Susan have been in Swaffham, David has walked probably more of the county than most of us have driven through, including a mammoth walk from Swaffham to Kings Lynn (or it might have been the other way around!) He is passionate about maps and will be passing on map-reading skills before leading a short walk in a loop around Little Cressingham.

Throughout the past year, Geraldine and I have been taking part in the online sessions provided for everyone on the Methodist Pioneering Pathways programme and at the beginning of February we will be at Cliff College for an extended weekend on New Places for New People.

We are both very drawn to Celtic spirituality and, building on Celtic Journeys from last year, for the Winter Wellbeing series, we will be sharing three sessions using practices drawn from the Celtic tradition to help to focus the whole person on God. We will also be presenting another programme of Music for Body, Mind and Soul where we encourage listening to music in a way which brings the physical, mental and emotional together into a form of deeper listening which connects to our spiritual selves.

The Hive is a gift and as we offer opportunities for different kinds of spiritual encounter, we hope to welcome people from around the Circuit to take part and we hope that you will help to spread the word about the buzz at The Hive.

Sarah Rodgers



## Methodist Women in Britain

*From Elizabeth Wright:* In November 1774 John Wesley made a journey westwards from Lowestoft. He travelled via Norwich, on to Ely, over soggy fenland to Erith and thence to the ancient market town of St Ives. In his 'Journal' he records that "No Methodist had preached in this town; so I thought it high time to begin; and about

1.00 p.m. I preached to a very well-behaved congregation." Last autumn MWiB ladies gathered in Lowestoft for their District Day; this spring we will be following in John Wesley's footsteps when we meet in the recently re-furbished Methodist Church at St Ives for our District Day on Thursday, 12<sup>th</sup> May. Under the title, 'Tiffers, Tatties, Toilets and watery facts of life', Sandra Goodwin, a former Connexional President of MWiB, will be speaking to us about her visits to Bolivia, the Solomon Islands and Fiji.

MWiB events are open to everyone so if you would like to join us for a speaker-centred day of Christian fellowship I will be happy to let you have further details. Transport to the extremities of our large District always poses a problem but there is a public car park situated very close to the Church in St Ives. Where it is possible we aim to car-share.

A date for the Easter Offering service is still to be arranged, but the theme for that act of thanksgiving is 'Tell her story, tell our story'. It features the stories of women which have often been forgotten or overlooked. It is inspired by the tenth anniversary of Methodist Women in Britain and the work it has done to empower and enable women around the world. The Easter Offering tradition dates back to 1883, when women in Manchester collected £32 for missionary work overseas from 'Christmas pennies' donated at family gatherings on Christmas Day. In the following year, the London Districts distributed Easter envelopes and collecting bags asking for a penny a head. This raised £100. By 1900, 'Women's Work' raised £1,655 for the work of overseas missions. Today the annual collection averages £300,000 all of which goes to the 'World Mission Fund' of the Methodist Church in Britain. From there it is distributed to help support the work of our Partner Churches around the world. The worldwide Methodist Connexion is grateful for your generous giving to this cause.

## A POEM

*Submitted by Rosemary Wakelin*

This atmospheric poem, about COVID hitting Holt, is by a friend of mine who wishes to remain anonymous. It seems to capture the estrangement we can feel when places, normally busy, are suddenly deserted. This pandemic reminds us of our need for one another - maybe making a 'phone call or visit to someone on their own?



Where is this deserted street?  
A town I thought I knew  
Once peopled, busy, noisy  
Silent now, but not a peaceful silence.  
My footsteps echo  
From closed doors,  
From shuttered shops.  
A clock measures remorseless time,  
Time when here life pulsed,  
Time for the greeting of friends,  
Time this place has had to forget.  
A dormancy more profound than sleep,  
An anxious, troubled slumber,  
A night with dawn postponed.  
Will clouds lift?  
Will light come?  
Will this still be  
A town I thought I knew?

# BUILDING LITCHAM CHAPEL

From Stephen Lynn: This photograph has come to light and may be of interest to anyone who has an interest in Methodist history. The exact date of the picture is unclear but is circa 1908, and shows the chapel at Litcham under construction.



It is interesting to contrast the methods in use then concerning the use and fixing of scaffolding, and the total lack of any kind of safety equipment or PPE. I don't think those cloth caps would have offered much protection! It is worth mentioning that those chaps on the topmost beams are around 20 feet above the floor, so one wrong move and it would be a mighty big step to the floor.

Ah, the good old days!



BROUGHT TO YOU BY REV CLIFF & CHRISTINE SHANGANYA  
IN SUPPORT  
OF CHARITY WORK  LOCALLY AND ABROAD

DATE: 24/04/2022  
TIME: 2PM

VENUE: HOLT  
METHODIST CHURCH

DATE: 28/05/2022  
TIME: 2PM

VENUE: WELLS  
METHODIST CHURCH

DATE: 18/06//2022  
TIME: 2PM

VENUE: STIBBARD  
METHODIST CHURCH

DATE: 09/07/2022  
TIME: 10:30AM

VENUE: FAKENHAM  
PARISH CHURCH

ORGANISERS LOCATION : NORFOLK IN UK POSTCODE: NR21 9HH  
CONTACT: WORLD IS MY PARISH TEAM ON: 07399855552  
<https://worldismyparishchildrensfoundation.com> 



## Pilgrim Methodist Church : Blakeney

Dedication and hanging of the painting  
'Pilgrim Assembly'  
by Dorothea S Harvey  
in our Lounge Area

+

Launch of our programme for 2022

Sunday March 20th 3pm

## Pilgrim Methodist Church : Walsingham

'A Little Light'

A history of Methodism in Walsingham  
by Norma Virgoe

Coming soon!

Details of Book Launch and package of  
tours/events/services to be announced  
in the near future

# **WATTON CHURCH**

## **BOOK THE DATE!**

### **JOIN US AND CELEBRATE!**

*Lesley Cowling writes:* In the last edition of *The Link* it was interesting (as always) to read Rev. Rosemary Wakelin's contribution: the more so this time because she concluded by quoting Charles Wesley's words:

'To serve the present age, my calling to fulfil'.

These words were much in the minds of the small group which met at Watton recently to plan activities in celebration of the 95<sup>th</sup> Anniversary of the 'new' Church and to re-dedicate the Centre, (previously the WCCC) as a place of worship, witness, and activity managed by the Methodist Church and seeking to reach out to the community in 2020 and beyond.

This is an opportunity to look back and give thanks for the past and to look forward in hope and prayer to the future. It is also a chance to focus and explore the many ways in which the church at Watton has always sought to 'serve the present age', from responding in 1927 to the need for more space to accommodate an ever-increasing Sunday School population, to embracing, in recent times the demands of a global pandemic by developing new and exciting ways of 'being church'.

Our plans include an outdoor celebration at 3.00 p.m. on the actual anniversary day – Thursday 7<sup>th</sup> July – and on the following days (8<sup>th</sup>, 9<sup>th</sup> and 10<sup>th</sup>) a talk by Rev. Jacqui, providing insights into the life of Augustus Scott (Church architect), and an exhibition of organisations who currently use the Centre. There will also be archive displays presented traditionally and technologically. The weekend will culminate in a service of celebration on Sunday 10<sup>th</sup> July led by Rev. Jacqui and Deacon Jen and followed by lunch.

This article is just a 'taster' as plans are in their infancy, but please, book the dates, watch out for more detailed information and come and join in – we'd love to welcome you to share our celebration!

## **FROM SAHAM HILLS**

For one of our recent Fellowship Services, Dot read out the following;

'I was looking for something as a reading for January and found this bit about prayer written by Pope Francis...

'Prayer is very important.  
Never forget to pray.  
Nobody can tell when we are praying,  
On the bus or on the road.

We pray with our heart;  
So let us take advantage of those opportunities to pray.'

Dot continued 'I later watched the Reverend Richard Coles on TV on his winter walk to the ruins of Rievaulx Abbey in Yorkshire. Standing in an empty ruin he spoke about our need for silence. He said 'We all need silence; we all need peace and we all need contemplation.'



# HOLT CHURCH

Here are some more extracts about the foundation and building of Holt Church from the United Methodist Free Church Magazines for 1862 and '63. They should probably carry one of those warnings they broadcast on news bulletins when something a bit risqué is about to be broadcast!



After tea, Mr. COZENS-HARDY, having been called to the chair said,— It may be interesting to many to know something of the early history of the introduction of evangelical religion, in the form of Methodism, into this town. The first attempt was made nearly eighty years ago. I have had access to written evidence that this took place, at all events, as far back as the year 1783. You will remember that Methodism was cradled in a storm. No one can read the life and times of Wesley and Whitefield without discovering, that in almost every town of any importance in which Methodism was introduced it was accompanied by a storm of persecution from an infuriated mob, composed of the enemies of all religion. Holt was no exception to this. It was notorious for wickedness at the time to which I allude; and a zealous local preacher, of the name of Mendham, who resided at Briston, having gained permission to occupy a small cottage, made an attempt to declare the truths of the Gospel to the people. This cottage, I believe, was very near the site upon which we have laid the corner-stone to-day. And so infuriated were the mob, urged on by those who ought to have known better, that they actually seized the pulpit, and placed it on the town pump in triumph and derision. This fact is re-

corded in a daily journal kept by my grandmother at that period. She states, that on the "6th of July, 1783, a mob was raised at Holt, on account of a Methodist meeting in the town." And it is also stated, that on the "14th of August, of the same year, the rioters were taken into custody by the Methodists;" but it does not appear how they were dealt with, or whether they escaped the punishment they so richly deserved. Thus the enemies of all righteousness gained a temporary victory over the little band of Methodists of that day. No further attempt,

I believe, was made by the Nonconformists of that period to preach in Holt till the year 1813, when a small chapel, now designated "Chancery Buildings," was built. My late uncle was the principal contributor towards its erection, and suffered considerable persecution in connexion with the support he afforded to the Methodism of that day. The followers of Wesley had, however, a chapel at Briston, and another at Cley-next-the-Sea, and frequently preached in a cottage at Letheringsett, long prior to the year 1813, at which place large congregations assembled from the surrounding villages. The Walsingham Circuit was formed soon after the death of Wesley, as appears by the minutes of Conference in 1792, and these places were connected with that Circuit; for Holt was not a distinct Circuit till the year 1815. Thus things went on with little opposition till the year 1838, when the small chapel becoming too strait for the people, the present Conference Chapel was erected. I can hardly trust myself to speak of the despotic proceedings of the Conference in the year 1850, by which we were compelled to leave that place of worship, or the subsequent chancery suit which was instituted against us—I would gladly throw a veil over these events. We have to-day laid the corner-stone of a building which will be as free from the trammels of the state, as from Conference despotism—and supported and kept in repair, not by rates wrung from the pockets of reluctant rate-payers, but by the free-will offerings of a united and devoted people. I know there are some who would have us believe that Wesleyans are not Dissenters. At all events they are not Conformists. I am a Dissenter, and I have no reason to be ashamed of my nonconformity any more than the men of 1662 had. I trust this new building will be a blessing to all around, "That your sons may be as plants grown up in their youth, and your daughters as corner-stones polished after the similitude of a palace."

# Y O U T H   W O R K

We often lament the lack of youth work in our churches. “It’s not like it used to be with churches full of children on Sunday mornings.” Perhaps we forget that the world has moved on. There is a huge amount of youth work going on if we keep our eyes open – but not usually in the middle of a Sunday morning. (Are you surprised – what other organisation can you think of that has its main meeting in the middle of a morning? Why does the church do this – if you don’t know see page 3)

So, for example: 3Generate is the Methodist young people’s youth movement. It aims to create an inclusive and diverse space for the prophetic voice of children and young people to emerge and be heard. It enables them to speak courageously, and listen to God and each other. Through the 3Generate process, children and young people are equipped to become participants in advocacy, change and growth and have an impact in their local Methodist communities. 3Generate calls the Church to listen to, and be in relationship and dialogue with and amongst, children and young people, so that change can happen together as a community. 3Generate is open to 8 – 23 year olds and, in an exciting new development last year they welcomed 4 to 7 year olds and their parents/carers or significant adults into their own 3Generate space.

Scripture Union works all over the country with local organisations in schools, churches and the local community. They are particularly targeting the 95% of children who never go near a church and know nothing about what – or rather who – it stands for.

Nearer to home in 1919 a group of Christian teachers started an annual camp on the cliff-top at West Runton to give young people a great holiday showing them that Christianity is both relevant and fun. Until Covid struck it has continued every year since (though it had to move elsewhere during the second world war), now taking place in Beeston Hall School and a number of other sites around the country. In 2019 it celebrated its centenary and is still going strong.

So – keep your eyes open and KEEP PRAYING!

Details of the above can be found online at:

3Generate: [www.methodist.org.uk](http://www.methodist.org.uk)

Scripture Union: [www.scriptureunion.org.uk](http://www.scriptureunion.org.uk)

West Runton Holidays: [www.westruntanholidays.org](http://www.westruntanholidays.org)



# NEWS FROM CHURCHES

## WATTON

Services are every Sunday are at 10.30 a.m. in the Church and at 6.30 .p.m in the large Vestry. Our morning worship is streamed live every Sunday. The service begins at 10.30 a.m. and the live stream starts from around 10.20 a.m.. This means that anyone unable to attend worship for whatever reason can still join in with a live congregation by using the following link in any website browser:

[bit.ly/WMC-live](https://bit.ly/WMC-live)

The service can be watched again at any time by using the same link. We have had 61 views, so far, of the Covenant Service on January 16th, and 41 views of morning worship when Deacon Jen was joined by her sister Denise in leading worship with strong musical emphasis. We look forward to welcoming more viewers and would welcome comments on how to improve the live streamed presentation.

In December, we had a very successful weekend with a display of Rev Jacqui's and Deacon Jen's collection of Nativity Sets, in The Methodist Centre.

We hope to restart our monthly Wednesday coffee mornings and Tuesday afternoon activities in the Spring.

At the time of writing, no details are available, but you can find us on Facebook - 'The Methodist Centre Watton'.

---

## TOFTWOOD

We are starting a new activity, Messy Church, on the fourth Tuesday every month. Please pray that it may have an impact on the young people who join us.

## MATTISHALL

We have continued with our monthly Charity Coffee Mornings but attendance has been varied, sometimes due to illness. Those who come appreciate the opportunity to meet up with others as several live on their own.

Bible study, which we share and alternate venues with Garvestone, has maintained numbers of just in double figures despite it being winter, the fear of Covid and the fact that we are now studying the first three chapters of Revelations.

Contrary to our comments in the last issue of *The Link* it now seems likely that the Dementia Support Group (The Link) will return to meeting again, possibly in March, as a new organiser has come forward to train for the role.

This year we will be hosting the annual World Day of Prayer service on Friday 4th March at 2 pm with members of the Mattishall Benefice and other local churches taking part.

Our Chapel 122nd Anniversary Service this year will be led by Rev Betty Trinder on 3rd April so we look forward to catching up with her then. In view of the current uncertainties with the virus we hope to have another event, probably in conjunction with our Coffee Morning, in June.

---

## SCULTHORPE AND FAKENHAM

We are very proud of a pair of nice new doors, the old ones had deteriorated badly. A lot of effort was put into making them appear as similar as possible to the originals and we are very pleased with the result.

# NEWS FROM

## HOLT

Life at Holt is very encouraging. We are a growing church having welcomed several new members recently. Holt is a retirement area so, while our age-profile maybe mature, over the years our numbers have either remained steady or, as at present, increased. God has a use for all ages!

We are experiencing an increase in interest from the community in using our premises. Hopefully this will increase further once our Development Project is complete.

The Development Project – which we are calling ‘Light and Life for All’ – is progressing steadily through all the reams of paperwork involved. At the moment we are in the midst of a Feasibility Study. We are told that our hoped for completion target of Christmas 2023 is realistic (but by no means certain!).

We have established a new choir to lead the singing in our services under the leadership of Robert Sutherland. It meets for rehearsals on the second and fourth Fridays of the month. ‘Be there or B b!’

Meanwhile all our regular activities continue. The Cream Teas organised by Joselyn Bunting and her team attract a very faithful following (and thereby help to make us known in the community)! We are also in the midst of an Alpha Course held, usually, at 6.00 p.m. on a Wednesday evening and all day on Saturday April 2nd. It begins with a meal and anyone is welcome to attend any of the sessions. Please give Joselyn Bunting a ring (01263 712068) so we know to expect you. (See advert on page 15)

## WELLS

£161.00 was raised for St. Martins Trust as our Christmas appeal.

We held a very successful service during the Week of Prayer for Christian Unity.

There will be a service on Maundy Thursday at 7.30 p.m. with Cliff Shanganya, to which everyone in the Circuit is invited.

Our thoughts and prayers are with Pat Garwood and Colin's family as they mourn his passing.

---

## GREAT ELLINGHAM

Since Coronavirus lockdown started in March 2020 we have not been able to hold Coffee Mornings and Fellowship meetings. We have now decided to start Coffee Mornings again on the first Thursday of every month starting on 3rd March 10 – 11 a.m. Any support will be gratefully received.

Sadly we are not able to have Fellowship Meetings due to lack of members.

Our Sunday Services, are as in *The Link*, usually once fortnightly.

---

## GARVESTONE

On March 27<sup>th</sup>, and until October 2<sup>nd</sup>, our services will begin at 6.00 p.m.

On May 8<sup>th</sup> we hope to welcome Rev. Cliff Shanganya to Garvestone to lead us in our Chapel Anniversary worship. (Two previous appointments have been prevented by bad weather and coronavirus.)

# CHURCHES

## SAHAM HILLS

We are delighted to have been open for weekly worship at the chapel since April 2021 although we are being very cautious. We are still using hand sanitiser, wearing masks and 'signing in'.

In December of 2021, we were pleased to hold our Christmas Coffee Morning and welcome some of our friends from the village. The usual table tops were laden with crafts, cakes and BOOKS! Whilst we have been in various lockdowns, the books and jigsaws stashed in the School Room, have acted as a 'lending library' except people have borrowed one book (or jigsaw) and returned 2 or 3. An outdoor book sale in the summer disposed of some but...does anyone want any books?

Our Carol Service took place on Sunday 19<sup>th</sup> December at 2pm, with all Covid restrictions in place. This was taken by Deacon Jen Woodfin. Not only did Jen take the service but, as you all know, she is an accomplished musician and she accompanied the carols on the organ. Thank you, Jen.

---

## LITCHAM

We are delighted that we can reinstate our two Easter 'walking events' after a 2 year break. On Palm Sunday we are uniting with our Anglican friends at 10.15 a.m. for a processional service, stopping at various points in the village for hymns, prayers and readings. On Good Friday, at 10.00 a.m. we are gathering at Tittleshall chapel for our 2 mile mini-pilgrimage to Litcham, carrying a large wooden cross. There will be a meditative service at Litcham, beginning at 10.15 a.m. for those who wish to be part of the morning but are unable to walk.

## STIBBARD

You may have noticed we have an activity called 'Credo' which has not been mentioned before. Credo started a few years ago with someone, from the Anglican Church, with whom we pray regularly, wanting to engender interest in the Mothers' Union. She needed a venue and thought SMCC was good. It started with a lunch, followed by a speaker, but many of the elder ladies didn't want to sit for the speaker, so that element was dropped. They did, however, want to meet for lunch. We provided the venue, laid the tables and cleared up, but the people from the Heart of Norfolk Benefice provided the food. After Covid, those who provided the lunch felt it was too much to do and thought about closing it, but that was not popular so now we provide the lunch as well. Any profits are to be split between Stibbard Methodist Church and the Heart of Norfolk Benefice Open the Book Team. Although it is mostly Anglicans who attend, food is a great way of meeting ecumenically, so anyone is welcome on the First Thursday in the Month.

Please note that our Railway Film Afternoons in March and April are a week later than usual as March 5<sup>th</sup> is the Local Preachers Weekend and April 2<sup>nd</sup> is Synod.

---

## GRESSENHALL

We are feeling very smart having had the chapel building painted outside and fully redecorated inside.

It makes the building seem more special and stimulates our worship!

# AROUND THE CIRCUIT

*For your information, prayer and support*

## TOFTWOOD

**Services:** every Sunday at 11.00 a.m. followed by a Bring and Share Lunch on March 6th, April 3rd, May 1st.

**Weekly Lace Group:** Mondays 9.30 a.m. – 12.00 noon.

**Guides:** Mondays 7.00 – 8.30 p.m.

**Messy Church:** 3.30 – 5.00 p.m. March 22nd, April 26th, May 24th.

**Coffee Morning:** 10.00 – 11.30 a.m. March 2nd, April 6th, May 4th.

**Craft Group:** 2.00 – 4.00 p.m. March 2nd, April 6th, May 4th.

**Lunch & Linger:** 12.00 noon – 2.30 p.m. March 9th, April 13th, May 11th.

**Carpet Bowls:** Thursdays 1.45 – 4.00 p.m.

**Film Club:** 2.00 p.m. March 11th, April 8th, May 13th.

**Shrove Tuesday:** pancakes served 12.00 noon – 2.00 p.m. March 1st, tickets £5.00.

## WELLS

with Churches Together in Wells

**Services:** every Sunday at 11.00 a.m.

**Prayer and Praise:** Every Wednesday at 10.30 a.m.

### Easter services:

Maundy Thursday 7.30 p.m. led by Rev Cliff Shanganya

Good Friday 10.30 a.m.

Easter Day 11.00 a.m. led by Tony Hey

## HOLT

**Services:** every Sunday at 11.00 a.m.

**Friday Prayer Time:** 9.30 a.m. on Fridays.

**Alpha Course:** 6.00 pm on Wednesdays (except March 16th) until May 4th. Details from Joselyn Bunting (01263 712068).

**Cream Teas:** 2.00 – 4.00 p.m. March 18th, April 22nd, May 20th.

### Easter services:

Good Friday: 9.30 a.m. Hot Cross Buns served

10.00 a.m. Service

11.00 a.m. Ecumenical

Procession of witness

Easter Day: 6.00 a.m. Sunrise service on Spout Hills

7.00 a.m. Breakfast

11.00 a.m. Easter Communion

Service led by Rev Rosemary Wakelin

**Fundraising Concert** featuring Rev Cliff and Christine Shanganya: 2.00 p.m. April 30th.

## MATTISHALL

**Services:** every Sunday at 2.30 p.m.

**Monthly Charity Coffee Mornings:** 10.00 – 11.30 a.m. March 19th, April 16th, May 21st.

**World Day of Prayer Service:** 2.00 p.m. March 4th.

**Chapel Anniversary:** 2.30 p.m. April 3rd, led by Rev Betty Trinder.

## GARVESTONE

**Services:** every Sunday at 2.30 p.m. until March 13 and 6.00 p.m. from March 27th, except the third Sundays when we meet at 11.00 a.m. at the chapel or the parish church.

**Chapel Anniversary:** 6.00 p.m. May 8th led by Rev Cliff Shanganya.

**Good Friday meditation:** 2.00 p.m. April 15th (as part of our Prayer Meeting).

**Prayer Meetings:** 2.00 p.m. March 18th, April 15th. 7.00 p.m. May 20th.

**Knit and Natter:** 10.30 a.m. – 12.00 noon March 8th, April 12th, May 10th. Contact Lorna Folkes re venue: 01362 858391.

## BEETLEY

**Services:** 10.30 a.m. on the second and fourth Sundays.  
6.00 p.m. on the first and third Sundays.  
10.30 a.m. on the 5th Sunday (29th May)

**Maundy Thursday:** 7.00 p.m. service led by Rev Anne Richardson.

**Prayer Meeting:** 9.30 a.m. March 2nd, April 6th, May 4th.

**Drop-in:** 2.00 – 3.00 p.m. March 2nd, 16th, April 6th, 20th, May 4th, 18th.

**Knit 'n' Natter:** 2.00 – 3.00 p.m. March 23rd, April 27th, May 25th.

**Bible Study:** Lent Course, Thursday at 2.00 p.m., beginning 10th March at Beetley.

## GREAT ELLINGHAM

**Services:** alternate Sundays at 2.30 p.m. in the school room.

**Coffee Mornings:** 10.00 – 11.00 a.m. March 3rd, April 7th, May 5th.

## DEREHAM

Trinity

**Services:** every Sunday at 10.45 a.m.

### **Easter Services:**

Maundy Thursday 10.45 a.m. led by Rev Anne Richardson

Easter Day 9.00 a.m. Egg Breakfast  
10.45 a.m. Service led by Rev Anne Richardson

**Mid-week Communion:** 11.30 a.m. March 31st, April 14th, May 26th. (Contact Rev Anne)

**Cards and Chatter:** 10.00 a.m. March 24th, April 28th, May 26th. (Contact Sylvia Meredith 01362 693425)

**Lunch Club:** 12 noon March 10th, April 14th, May 12th. (Contact Pam Beardmore 01362 854394).

**Women's Own:** 2.45 p.m. March 8th, 15th, 22nd, 29th, April 5th, 12th, 26th, May 3rd, 10th, 17th, 24th. (Contact Olwyn Brough 01362 692799)

**Coffee Mornings:** 10.00 a.m. March 24th, April 21st, May 19th.

**Coffee Morning** at the home of Sylvia and Richard Meredith (12 Elvin Road): 10.00 a.m. – 12.00 noon March 31st.

## THE PILGRIM CHURCH

### Blakeney

**Community Garden:** open daily.

**Services:** every Sunday at 11.00 a.m. (except 20th March – 3.00 p.m.)

### Walsingham

**Services** followed by refreshments: 4.30 p.m. March 13th, April 3rd, May 8th.

## STIBBARD

**Services;** every Sunday at 11.00 a.m.

**Ecumenical Prayers and Coffee:** 10.30 a.m. Tuesdays.

**Lunch @ The Centre:** 12.30 p.m. March 9th, April 13th, May 11th.

**Credo Lunch:** 12.30 p.m. March 3rd, April 7th, May 5th.

**Railway Film Afternoons with Tea and Cake:** 2.30 p.m. March 12th, April 9th, May 7th.

**Quiz Night @ The Centre:** 7.00 for 7.30 p.m. May 27th.

**Circuit Choir Practice:** 7.30 p.m. March 18th, April 1st, 15th, May 6th, 20th.

## SWAFFHAM

**Services:** every Sunday at 10.45 a.m.

**Mothering Sunday All-age Service:** 10.45 a.m. March 27th led by Deacon Jen Woodfin.

**Easter services:**

Good Friday tba

Easter Day 10.45 a.m. Easter

Communion led by Rev Jacqui Horton.

**Power of Prayer Group:** Every Friday 9.30 a.m. Praying for God's world.

**The Meeting Place drop-in:** 10.00 a.m. – 12.00 noon every Tuesday.

**Church Coffee Morning with stalls selling books and puzzles:** 9.30 a.m. – 12.00 noon March 5th, April 2nd, May 7th.

**Swaffham Friendship Group:** 3.00 – 4.00 p.m. March 10th, 24th, April 14th, April 28th, May 12th, May 26th.

## HINGHAM

**Services:** every Sunday at 10.30 a.m.

**Coffee Shop with stalls and children's crafty corner:** 10.00 a.m. – 12.00 noon March 5th, April 2nd, May 7th.

**Take-a-Break – Tuesday Soup Lunch:** 12.00 noon – 2.30 p.m. March 15th, April 12th.

## FULMODESTON

**Services:** first and third Sundays at 2.30 p.m.

**Easter Day Service:** 2.30 p.m. led by Rev Cliff Shanganya

**Chapel Anniversary:** 2.30 p.m. May 1st, led by Rev Rosemary Wakelin.

## SCULTHORPE AND FAKENHAM

**Services:** alternate Sundays at 11.00 a.m. until the end of March, thereafter weekly.

**Mothering Sunday Service:** 11.00 a.m. March 27th led by Sam Parfitt.

**Good Friday:** 3.00 p.m. service led by Rev Cliff Shanganya and Pippa Cook.

## WENDLING

**Services:** alternate Sundays at 10.30 a.m.

**Chapel Anniversary:** 10.30 a.m. April 10th led by Elizabeth Wright.

**Coffee Mornings:** 10.30 a.m. – 12.00 noon March 23rd, April 20th, May 18th.

## WATTON

**Services:** every Sunday at 10.30 a.m. (live streamed) and 6.30 p.m.

## THURSFORD

**Services:** fortnightly at 6.30 p.m.



## LITCHAM

**Services:** every Sunday at 10.30 a.m.

**Palm Sunday:** 10.15 a.m. open air  
processional united service

**Coffee Mornings:** 10.30 a.m. – 12.00 noon  
every Thursday

## SPORLE

**Services:** 11.00 a.m. alternate Sundays

**United service** with St Mary's (in the chapel)  
on the third Sunday in the month

## TITTLESHALL

**Services:** every Sunday at 9.30 a.m.

**Coffee Mornings:** 10.30 a.m. – 12.00 noon  
every Wednesday.

## GRESSENHALL

**Services:** alternate Sundays at 2.30 p.m.

## NEW HOLKHAM

**Services:** 2.30 p.m. last Sunday in the month

## NORTHERN PRAYER FELLOWSHIP

**Bible Study and Prayer:** 7.15 p.m. alternate  
Monday evenings via Zoom March 21st, April  
4th, May 2nd, May 16th, May 30th

Contact Glyn Constantine:  
glynandang@gmail.com

## SAHAM HILLS

**Services:** every Sunday at 10.30 a.m.

## CIRCUIT MEETINGS

Wednesday 16<sup>th</sup> March 2022 on Zoom  
Wednesday 15<sup>th</sup> June 2022 at Swaffham

All meetings begin at 7.15 p.m.

## MINI-PILGRIMAGE

Good Friday carrying a cross from Tittleshall to Litcham departing at 10.00 a.m.

**REGULAR Weekly dates for prayer** Further details elsewhere in *The Link*.

Daily	All day	Community Garden	Blakeney MC
Mon	9.30-12.00	Weekly Lace Group	Toftwood MC
Mon	7.00-8.30	Guides	Toftwood MC
Tues	10.00-12.00	The Meeting Place Drop-in	Swaffham MC
Tues	10.30 am	Ecumenical Prayers and Coffee (fortnightly)	Stibbard
Wed	10.30-12.00	Coffee Morning	Tittleshall MC
Wed	10.30 am	Prayer and Praise	Wells MC
Thurs	10.30-12.00	Coffee Morning	Litcham MC
Thurs	2.00-4.00	Bowls Club	Toftwood MC
Thurs	2.45pm	Women's Own (except April 14)	Dereham Trinity
Fri	9.30 am	Friday Prayer Time	Holt MC
Fri	9.30 am	Power of Prayer Group	Swaffham MC
Fri	1.00-3.00	Chapel open to visitors	Walsingham MC

## **DATES FOR PRAYER AND SUPPORT**

*Continued from page 27*

April 22	2.00-4.00	Cream Teas	Holt MC
April 26	3.30-5.00	Messy Church	Toftwood MC
April 27	2.00-3.00	Knit 'n' Natter	Beetley MC
April 27	6.00-8.15	Alpha Course	Holt MC
April 28	10.00am	Cards and Chatter	Dereham Trinity
April 28	3.00-4.00	Swaffham Friendship Group	Swaffham MC
April 30	2.00pm	Fundraising Concert with Rev Cliff and Christine Shanganya	Holt MC
May 1	11.00am	This week's service followed by Bring & Share Lunch	Toftwood MC
May 1	2.30pm	Chapel Anniversary led by Rev Rosemary Wakelin	Fulmodeston MC
May 2	7.15pm	Bible Study and Prayer (Northern Prayer Fellowship)	Zoom
May 4	9.30am	Prayer meeting	Beetley MC
May 4	10.00-11.30	Coffee Morning	Toftwood MC
May 4	2.00-3.00	Drop-in	Beetley MC
May 4	2.00-4.00	Craft Group	Toftwood MC
May 4	6.00-8.15	Alpha Course	Holt MC
May 5	10.00-11.00	Coffee Morning	Great Ellingham MC
May 5	12.30pm	Credo Lunch	Stibbard M Ch Centre
May 6	7.30 pm	Circuit Choir Practice	Stibbard M Ch Centre
May 7	9.30-12.00	Church Coffee Morning	Swaffham MC
May 7	10.00-12.00	Coffee Shop	Hingham MC
May 7	7.30pm	Railway Film Evening	Stibbard M Ch Centre
May 8	4.30pm	Service followed by refreshments	Walsingham MC
May 8	6.00pm	Chapel Anniversary led by Rev Cliff Shanganya	Garvestone MC
May 10	10.30-12.00	Knit and Natter	Garvestone MC
Mar 10	3.00-4.00	Swaffham Friendship Group	Swaffham MC
May 11	12.00-2.30	Lunch & Linger	Toftwood MC
May 11	12.30pm	Lunch @ The Centre	Stibbard M Ch Centre
May 12	12.00noon	Lunch Club	Dereham Trinity
May 12	3.00-4.00	Swaffham Friendship Group	Swaffham MC
May 13	2.00pm	Film Club	Toftwood MC
May 16	7.15pm	Bible Study and Prayer (Northern Prayer Fellowship)	Zoom
May 18	10.30-12.00	Coffee Morning	Wendling MC
May 18	2.00-3.00	Drop-in	Beetley MC
May 19	10.00am	Coffee Morning	Dereham Trinity
May 20	2.00-4.00	Cream Teas	Holt MC
May 20	7.00pm	Prayer Meeting	Garvestone MC
May 20	7.30 pm	Circuit Choir Practice	Stibbard M Ch Centre
May 21	10.00-11.30	Charity Coffee Morning	Mattishall MC
Mar 24	3.00-4.00	Swaffham Friendship Group	Swaffham MC
May 24	3.30-5.00	Messy Church	Toftwood MC
May 25	2.00-3.00	Knit 'n' Natter	Beetley MC
May 26	10.00am	Cards and Chatter	Dereham Trinity
May 26	11.30am	Mid-week Communion (tbc)	Dereham Trinity
May 26	3.00-4.00	Swaffham Friendship Group	Swaffham MC
May 27	7.30pm	Quiz Night @ The Centre	Stibbard M Ch Centre
May 30	7.15pm	Bible Study and Prayer (Northern Prayer Fellowship)	Zoom

## **DATES FOR PRAYER AND SUPPORT**

***Continued from page 28***

April 2	10.00-12.00	Coffee Shop	Hingham MC
April 3	11.00am	This week's service followed by Bring & Share Lunch	Toftwood MC
April 3	2.30pm	Chapel Anniversary	Mattishall MC
April 3	4.30pm	Service followed by refreshments	Walsingham MC
April 4	7.15pm	Bible Study and Prayer (Northern Prayer Fellowship)	Zoom
April 6	9.30am	Prayer meeting	Beetley MC
April 6	10.00-11.30	Coffee Morning	Toftwood MC
April 6	2.00-3.00	Drop-in	Beetley MC
April 6	2.00-4.00	Craft Group	Toftwood MC
April 6	6.00-8.15	Alpha Course	Holt MC
April 7	10.00-11.00	Coffee Morning	Great Ellingham MC
April 7	12.30pm	Credo Lunch	Stibbard M Ch Centre
April 8	2.00pm	Film Club	Toftwood MC
April 9	2.30pm	Railway Film Afternoon	Stibbard M Ch Centre
April 10	10.15am	Palm Sunday Open Air United Service	Litcham
April 10	10.30am	Chapel Anniversary led by Elizabeth Wright	Wendling MC
April 12	10.30-12.00	Knit and Natter	Garvestone MC
April 12	12.00-2.30	Take-a-Break—Tuesday Soup Lunch	Hingham MC
April 13	12.00-2.30	Lunch & Linger	Toftwood MC
April 13	12.30pm	Lunch @ The Centre	Stibbard M Ch Centre
April 13	6.00-8.15	Alpha Course	Holt MC
April 14	10.45am	Maundy Thursday Communion Service	Dereham Trinity
April 14	12.00noon	Lunch Club	Dereham Trinity
April 14	3.00-4.00	Swaffham Friendship Group	Swaffham MC
April 14	7.00pm	Maundy Thursday Service	Betley MC
April 14	7.30pm	Maundy Thursday Service	Wells MC
April 15	tba	Good Friday Service	Swaffham MC
April 15	10.00am	Good Friday Service (preceded by Hot Cross Buns)	Holt MC
April 15	10.00am	Mini-Pilgrimage from Tittleshall to Litcham	
April 15	10.30am	Good Friday Service	Wells MC
April 15	11.00am	Ecumenical Procession of Witness	From Holt MC
April 15	2.00pm	Prayer Meeting including Good Friday meditation	Garvestone MC
April 15	3.00pm	Good Friday Service	Sculthorpe & Fakenham MC
April 15	7.30 pm	Circuit Choir Practice	Stibbard M Ch Centre
April 16	10.00-11.30	Charity Coffee Morning	Mattishall MC
April 17	6.00am	Sunrise Service	Spout Hills, Holt
April 17	9.00am	Egg Breakfast	Dereham Trinity
April 17	10.45am	Easter Day Service	Dereham Trinity
April 17	1-.45am	Easter Day Communion Service	Swaffham MC
April 17	11.00am	Easter Day Communion Service	Holt MC
April 17	11.00am	Easter Day Service	Wells MC
April 17	2.30pm	Easter Day Service	Fulmodeston MC
April 20	10.30-12.00	Coffee Morning	Wendling MC
April 20	2.00-3.00	Drop-in	Beetley MC
April 20	6.00-8.15	Alpha Course	Holt MC
April 21	10.00am	Coffee Morning	Dereham Trinity

# **DATES FOR YOUR PRAYERS AND SUPPORT**

**Further details on pages 26-27**

Mar 1	12.00-2.00	Shrove Tuesday pancakes served	Toftwood MC
Mar 2	9.30am	Prayer meeting	Beetley MC
Mar 2	10.00-11.30	Coffee Morning	Toftwood MC
Mar 2	2.00-3.00	Drop-in	Beetley MC
Mar 2	2.00-4.00	Craft Group	Toftwood MC
Mar 2	6.00-8.15	Alpha Course	Holt MC
Mar 3	10.00-11.00	Coffee Morning	Great Ellingham MC
Mar 3	12.30pm	Credo Lunch	Stibbard M Ch Centre
Mar 4	2.00pm	World Day of Prayer Service	Mattishall MC
Mar 5	9.30-12.00	Church Coffee Morning	Swaffham MC
Mar 5	10.00-12.00	Coffee Shop	Hingham MC
Mar 6	11.00am	This week's service followed by Bring & Share Lunch	Toftwood MC
Mar 8	10.30-12.00	Knit and Natter	Garvestone MC
Mar 9	12.00-2.30	Lunch & Linger	Toftwood MC
Mar 9	12.30pm	Lunch @ The Centre	Stibbard M Ch Centre
Mar 9	6.00-8.15	Alpha Course	Holt MC
Mar 10	12.00noon	Lunch Club	Dereham Trinity
Mar 11	2.00pm	Film Club	Toftwood MC
Mar 12	2.30pm	Railway Film Afternoon	Stibbard M Ch Centre
Mar 13	4.30pm	Service followed by refreshments	Walsingham MC
Mar 13	12.00-2.30	Take-a-Break—Tuesday Soup Lunch	Hingham MC
Mar 16	2.00-3.00	Drop-in	Beetley MC
Mar 17	10.00am	Coffee Morning	Dereham Trinity
Mar 18	2.00pm	Prayer Meeting	Garvestone MC
Mar 18	2.00-4.00	Cream Teas	Holt MC
Mar 18	7.30 pm	Circuit Choir Practice	Stibbard M Ch Centre
Mar 19	10.00-11.30	Charity Coffee Morning	Mattishall MC
Mar 22	3.30-5.00	Messy Church	Toftwood MC
Mar 23	10.30-12.00	Coffee Morning	Wendling MC
Mar 23	2.00-3.00	Knit 'n' Natter	Beetley MC
Mar 23	6.00-8.15	Alpha Course	Holt MC
Mar 23	7.15pm	Bible Study and Prayer (Northern Prayer Fellowship)	Zoom
Mar 24	10.00am	Coffee Morning	Dereham Trinity
Mar 27	10.45am	Mothering Sunday All-age Service	Swaffham MC
Mar 27	11.00am	Mothering Sunday Service	Sculthorpe & Fakenham MC
Mar 30	6.00-8.15	Alpha Course	Holt MC
Mar 31	10.00-12.00	Coffee Morning	12 Elvin Road, Dereham
Mar 31	10.00am	Cards and Chatter	Dereham Trinity
Mar 31	11.30am	Mid-week communion	Dereham Trinity
April 1	7.30 pm	Circuit Choir Practice	Stibbard M Ch Centre
April 2	All day tbc	Alpha Course full day	The Treehouse, Holt
April 2	9.30-12.00	Church Coffee Morning	Swaffham MC